

It's time to phase in *RHD* genotyping for patients with a serologic weak D phenotype

S. Gerald Sandler,¹ Willy A. Flegel,² Connie M. Westhoff,³ Gregory A. Denomme,⁴ Meghan Delaney,⁵ Margaret A. Keller,⁶ Susan T. Johnson,⁷ Louis Katz,⁸ John T. Queenan,⁹ Ralph R. Vassallo,¹⁰ and Clayton D. Simon¹¹

In 2014, the College of American Pathologists (CAP) Transfusion Medicine Resource Committee (TMRC) reported the results of a survey of more than 3100 laboratories concerning their policies and procedures for testing serologic weak D phenotypes and admin-

istration of Rh immune globulin (RhIG).¹ Among the findings of this survey is the observation that there is a lack of standard practice in the United States for interpreting the RhD type when a serologic weak D phenotype is detected. In some laboratories, an individual with a serologic weak D phenotype, especially if a blood donor, is interpreted to be RhD-positive. In the same or other laboratories, especially if a serologic weak D phenotype is detected in a female of childbearing potential, the individual is likely to be managed as RhD-negative for transfusions and, if pregnant, considered a candidate for RhIG. Also, the performance characteristics of serologic typing methods for RhD vary. For patients, including pregnant women, the majority of laboratories have policies and procedures that do not use the indirect antiglobulin (weak D) test, thereby avoiding detection of a serologic weak D phenotype so that the RhD type will be interpreted to be RhD-negative. Other laboratories typically perform a weak D test for the same category of patients. For blood donors and newborns, it is standard practice for laboratories to have policies and procedures for RhD typing to ensure that serologic weak D phenotypes are detected and interpreted as RhD-positive.¹

ABBREVIATIONS: ACOG = American College of Obstetricians and Gynecologists; CAP = College of American Pathologists; TMRC = Transfusion Medicine Resource Committee.

From the ¹Department of Pathology and Laboratory Medicine and the ⁹Department of Obstetrics and Gynecology, MedStar Georgetown University Hospital, Washington, DC; the ²Department of Transfusion Medicine, Clinical Center, National Institutes of Health, Bethesda, Maryland; the ³Immunohematology and Genomics Laboratory, New York Blood Center, New York, New York; the ⁴Diagnostic Laboratories and ⁷Clinical Education, BloodCenter of Wisconsin, Milwaukee, Wisconsin; ⁵Red Cell Genomics Laboratory, Puget Blood Center, and the Department of Laboratory Medicine, University of Washington, Seattle, Washington; the ⁶National Molecular Laboratory and the ¹⁰Medical Office, American Red Cross Biomedical Services, Philadelphia, Pennsylvania; the ⁸Medical Office, Americas Blood Centers, Washington, DC; and ¹¹Armed Services Blood Program, Falls Church, Virginia.

Address reprint requests to: S. Gerald Sandler, MD, Department of Laboratory Medicine, MedStar Georgetown University Hospital, 3800 Reservoir Road, NW, Washington, DC 20007; e-mail: sandlerg@gunet.georgetown.edu.

Supported by the Intramural Research Program of the NIH Clinical Center (WAF).

The recommendations and opinions expressed are those of the authors, not their institutions or organizations. The views expressed do not necessarily represent the view of the National Institutes of Health, the Department of Health and Human Services, or the US Federal Government.

Received for publication August 22, 2014; revision received October 7, 2014, and accepted October 7, 2014.

doi: 10.1111/trf.12941

Published 2014. This article is a U.S. Government work and is in the public domain in the USA.

TRANSFUSION 2015;55:680–689.

The goal of these RhD typing practices is to protect RhD-negative persons from inadvertent alloimmunization to the D antigen by exposure to RhD-positive red blood cells (RBCs), including RBCs expressing a serologic weak D phenotype. Although there has not been a recent prospective study in the United States, it is estimated that current RhD typing practice, together with contemporary obstetric practices for administration of antepartum and postpartum RhIG, is 98.4% to 99% successful in preventing RhD alloimmunization and RhD hemolytic disease of the fetus or newborn.² However, there are unwarranted consequences associated with the practice of not determining the *RHD* genotype of persons with a serologic weak D phenotype, including unnecessary injections of RhIG and transfusion of RhD-negative RBCs—always in short supply—when RhD-positive RBCs could be transfused safely.

CAP's TMRC reviewed the current status of *RHD* genotyping and proposed that selective integration of

RHD genotyping in laboratory practices could improve the accuracy of RhD typing results, reduce unnecessary administration of RhIG in women with a serologic weak D phenotype, and decrease unnecessary transfusion of RhD-negative RBCs to recipients with a serologic weak D phenotype.¹ In response to the findings of the CAP TMRC survey, AABB and CAP convened a Work Group on *RHD* Genotyping and charged it with developing recommendations to clarify clinical issues related to RhD typing in persons with a serologic weak D phenotype. As an initial step for formulating recommendations, the Work Group reviewed the current state of molecular science of *RHD*, including more than 140 publications covering background;¹⁻¹² D variants with anti-D;¹³⁻²⁹ molecular basis of serologic weak D phenotypes;³⁰⁻⁹² reviews, editorials, and commentaries;⁹³⁻¹²⁹ technical resources;¹³⁰⁻¹⁴² and standards and guidelines.¹⁴³⁻¹⁴⁹ This commentary summarizes the proceedings and recommendations of the Work Group.

HISTORY AND ORGANIZATIONAL POLICIES

The first report of a D variant antigen, initially named D^u, was published in 1946.⁴ To ensure that RBCs with a serologic weak D phenotype would not be transfused inadvertently as RhD-negative, the first edition of AABB Standards (1958) required testing for D^u if a donor's blood typed as RhD-negative by direct agglutination using "anti-D typing serum."¹⁴⁴ In contrast, Standards (1958) regarded a direct agglutination method using "anti-D serum" to be "sufficient" for RhD typing for transfusion recipients.¹⁴⁴ This strategy, namely, typing blood donors by a method that interprets a serologic weak D phenotype as RhD-positive, and typing patients by a method that typically interprets a serologic weak D phenotype as RhD-negative, has persisted for more than 50 years. Indeed, the current (29th) edition of Standards (2014) requires a method to detect weak expression of D for blood donor RBCs, but considers a weak D test for transfusion recipients to be "unnecessary," with the exception that testing for weak D is required for RBCs from a fetus or newborn of an RhD-negative mother to determine the mother's candidacy for RhIG.¹⁴⁹ The 10th edition of Standards (1981) addressed recommendations for RhD typing for the administration of RhIG for the first time and recommended that a woman's candidacy for receiving RhIG be determined by the same method as that for RhD typing blood donors.¹⁴⁴ Thus, a woman with a serologic weak D phenotype, that is, a positive weak D test result, was interpreted to be RhD-positive and not a candidate for RhIG. The American College of Obstetricians and Gynecologists (ACOG) addressed the issue of administration of RhIG in women with a serologic weak D phenotype for the first time in a 1981 practice bulletin.¹⁴⁵ ACOG recommended that RhD-negative women "whether Du positive or Du negative" were candidates for RhIG. That

recommendation was reversed within a few months to read that "[a] woman who is genetically D^u-positive is Rh-positive and administration of Rh immune globulin is unnecessary."¹³⁰ In 1992, the D^u variant was renamed as weak D.⁷ The ACOG guidance remains unchanged in the most recent ACOG practice bulletin (1999), which recommends that women with a serologic weak D phenotype should be considered RhD-positive and not receive RhIG.¹⁴⁶ The consequence of this guidance is that the RBCs of a pregnant woman who inherited a serologic weak D phenotype may or may not be typed for RhD by a method that detects a serologic weak D phenotype, depending on the laboratory's policy, and she may or may not receive antepartum and postpartum RhIG.

RhD typing practice in the United States changed following the introduction of monoclonal anti-D reagents in the 1980s.¹³¹⁻¹³⁴ Monoclonal antibodies have increased sensitivity and can detect many RBCs with weak D expression as RhD-positive on initial testing. They can also be selected for specificity. Fatal hemolytic disease of the fetus or newborn has been associated with anti-D formed by women with a partial DVI phenotype,^{20,25} which is the basis for the requirement that monoclonal anti-D reagents licensed in the United States not detect RBCs with partial DVI as RhD-positive by initial testing.¹³⁷ The goal of the Food and Drug Administration requirement is to protect females of childbearing potential with a partial DVI phenotype from being typed as RhD-positive. RBCs with a partial DVI phenotype will be typed as RhD-positive as donors when a weak D test is performed.⁸ Hence, the 22nd edition of Standards (2003) recommended that "if the woman's test for D antigen is negative, a test for weak D is not required."¹⁴⁷ That standard persists in the current 29th edition of Standards (2014).¹⁴⁹

SEROLOGIC WEAK D PHENOTYPES AND MOLECULARLY DEFINED WEAK D TYPES

Serologic studies have distinguished three broad categories of D variants, namely, weak D, partial D, and DEL, from wild-type or conventional D. More than 200 *RHD* alleles are categorized by mutations that lead to qualitative and/or quantitative changes in serologic expression of the D antigen (see <http://www.uni-ulm.de/~fwagner/RH/RB2/>; also: <http://www.isbtweb.org/working-parties/red-cell-immunogenetics-and-blood-group-terminology/blood-group-terminology/blood-group-allele-terminology/>).

Serologic weak D phenotypes

A serologic weak D phenotype is defined as reactivity of RBCs with an anti-D reagent giving no or weak ($\leq 2+$) reactivity in initial testing, but agglutinating moderately or strongly with antihuman globulin.^{7,119,136,148} Many

serologic weak D phenotypes are associated with one or more amino acid substitutions in the RhD protein predicted to be within or below the RBC membrane causing decreased antigen expression on the RBC surface.³¹ The prevalence of serologic weak D phenotypes varies by race and ethnicity.¹¹⁹ Serologic weak D phenotypes are the most common D variants detected in Europe and the United States. An estimated 0.2% to 1.0% of Caucasians inherit *RHD* genes that code for serologic weak D phenotypes and the majority are associated with weak D type 1, 2, or 3.^{31,36,102} Reports of the prevalence of serologic weak D phenotypes also vary depending on the method (manual tube vs. automated analyzer), the anti-D reagent (polyspecific serum versus monoclonal blend), and whether potentiating reagents (bromelin) were used.^{103,136}

Most data concerning *RHD* alleles and the risk of alloimmunization associated with serologic weak D phenotypes are derived from observational studies in central Europe.^{32,33,55,75} These studies indicate that transfusion recipients with weak D type 1, 2, or 3, in the homozygous or hemizygous state, are not at risk for forming alloanti-D when exposed to conventional RhD-positive RBCs.^{55,75} Approximately 95% of Caucasians in central Europe with a serologic weak D phenotype have weak D type 1, 2, or 3 and can be managed safely as RhD-positive. The absence of alloimmunization in persons with weak D type 1, 2, or 3 is likely due to the fact that the distinct *RHD* allele codes for all epitopes of RhD, although present at lower surface density than on wild-type RBCs.³¹ Alloimmunization has been observed with certain other weak D types, including weak D type 4.2,^{33,55} (DAR),³¹ type 11,^{33,55} type 15,^{33,55} type 21,⁷¹ and type 57.⁶⁰

The Work Group reviewed published and unpublished reports to determine whether weak D types 4.0 and 4.1 should be recommended as weak D types that can be managed safely as RhD-positive. There are no published reports of allo- or autoanti-D in persons with weak D type 4.1 in large European cohorts^{55,75} despite their prevalence^{33,56} and frequent transfusions with RhD-positive RBCs.⁵⁶ The Work Group identified published exceptions for weak D type 4.0, notably, three cases with anti-D in Germany,⁵⁵ nine in France,⁷⁵ one in Tunisia,⁹¹ and three in the United States.⁸⁹ Only one patient in Europe among these 16 case reports has been shown to form an alloanti-D;⁷⁵ the 15 other patients formed autoanti-D. There are additional unpublished observations of alloanti-D in the racially and ethnically diverse patient populations in the United States (C. Westhoff, unpublished data, 2014). The Work Group limited its recommendation to manage serologic weak D phenotypes as RhD-positive to weak D types 1, 2, and 3 until more data are available.

Partial D phenotypes

Partial D phenotypes are associated with amino acid substitutions in the RhD protein on the RBC surface and lack

D epitopes.³¹ Many RBCs expressing a partial D antigen agglutinate by immediate spin using an anti-D reagent and are interpreted to be RhD-positive. Commercially marketed panels of monoclonal reagents are available to differentiate a number of partial D types. The percentage of persons with a partial D phenotype who form anti-D after transfusion with RhD-positive RBCs or delivery of an RhD-positive newborn is not known. However, there are many reports of RhD-positive persons, presumed to have a partial D phenotype, who formed anti-D.¹³⁻²⁹ The presence or absence of anti-D does not distinguish between serologic weak D and partial D phenotypes.¹²⁷ The most common partial D phenotypes in Europe are DNB,⁴⁰ DVI,⁸ and DVII.¹²⁸ In the United States, most persons expressing partial D phenotypes are of African ancestry. The Work Group did not address management of partial D phenotypes, except if the RhD variant is expressed as a serologic weak D phenotype, since the Work Group's charge focused on clinical management of patients with a serologic weak D phenotype.

DEL phenotypes

DEL phenotypes present by conventional blood typing as RhD-negative and are not detected serologically unless adsorption and elution studies are performed.^{41,148} The Asian-type DEL displays the complete repertoire of RhD antigen epitopes.^{38,72,92} DEL phenotypes, which are found more commonly among persons of Asian ancestry, do not present as a serologic weak D phenotype. Therefore, the Work Group did not formulate a recommendation for managing DEL phenotypes, although DEL phenotypes have been implicated as the cause of RhD alloimmunization when RhD-negative/DEL-positive RBCs were unknowingly transfused to RhD-negative recipients.^{48,50,142}

POTENTIAL BENEFITS OF *RHD* GENOTYPING FOR PATIENTS WITH SEROLOGIC WEAK D PHENOTYPES

Pregnant women

The Work Group recommends that *RHD* genotyping be performed when discordant RhD typing results are encountered and/or when a serologic weak D is identified in a female of childbearing potential. The Work Group estimates that if *RHD* genotyping were performed in RhD-negative women with a serologic weak D phenotype in the United States, approximately 13,360 of these women could be managed as RhD-positive, avoiding the injection of approximately 24,700 doses of RhIG annually. To calculate this estimate, the Work Group extrapolated data from studies of the prevalence of serologic weak D phenotypes and the number predicted to genotype as *RHD* weak D type 1, 2, or 3 in RhD-negative individuals, as follows (Fig. 1). There are an estimated 3,812,000 pregnancies annually in the United States, based on the prediction of

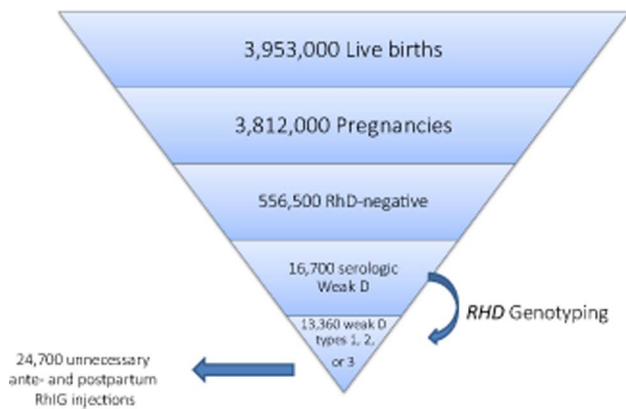


Fig. 1. Unnecessary RhIG injections. Of 3,953,000 live births in the United States each year, an estimated 13,360 mothers have a serologic weak D phenotype, which if confirmed by *RHD* genotyping, could be managed as RhD-positive. Adjusting for antepartum and postpartum dosing, *RHD* genotyping of pregnant women with a serologic weak D phenotype could prevent 24,700 unnecessary injections of RhIG.

3,953,000 births annually and adjusted for multiple births per pregnancy.¹⁴⁰ Of these 3,812,000 pregnancies, approximately 556,500 (14.6% × 3,812,000) are expected to occur in RhD-negative women, as 14.6% represents the overall prevalence of RhD-negative individuals among racially and ethnically mixed populations in the United States.¹³⁵ Extrapolating from data from central Europe,^{8,31,56} the Work Group estimated that of these pregnant women typed as RhD-negative, 16,700 (3.0% × 556,550) will have a serologic weak D phenotype. The 3.0% estimate was calculated using a value of 0.44% for serologic weak D phenotypes among RhD-positive and RhD-negative individuals in central Europe^{8,31,56} and a 14.6% overall prevalence of RhD-negative individuals among racially and ethnically mixed populations in the United States.¹³⁵ Approximately 80% of serologic weak D phenotypes in the ethnically mixed population in the United States are weak D types 1, 2, or 3 (C. Westhoff, unpublished experience, 2014). Therefore, an estimated 13,360 pregnant women, often typed as RhD-negative but having a serologic weak D phenotype (80% × 16,700) are expected to have an *RHD* genotype that could be managed safely as RhD-positive every year in the United States. At present, most pregnant women with a serologic weak D phenotype in the United States are managed as RhD-negative and, therefore, most of these pregnant women will receive at least one unnecessary antepartum injection of RhIG and as many as 25% of these women may receive a second injection because of first-trimester bleeding or an invasive procedure.¹³⁹ An additional 60% (8016) of these women with a serologic weak D phenotype will receive an unnecessary postpartum injection of RhIG because they will deliver a RhD-positive or weak RhD-positive newborn.¹³⁹ Thus, as many

as 24,700 (13,360 + 3340 + 8016) antepartum and postpartum injections of RhIG may be administered annually to 13,360 women with a serologic weak D phenotype who could be managed safely without RhIG as RhD-positive. The number of doses of RhIG saved increases with future pregnancies since, once identified, women with a weak D type 1, 2, or 3 could be managed as RhD-positive without repeat *RHD* genotyping.

While RhIG was one of the greatest medical advances of the 1960s, almost eliminating the mortality and morbidity of Rh hemolytic disease of the fetus or newborn, there are fiscal, safety, and ethical issues when biologic products such as RhIG are administered unnecessarily. Initially, RhIG was manufactured from pooled human plasma from mothers who had stillborns due to RhD alloimmunization. As the need for RhIG rapidly grew, RhD-negative male donors were paid to be injected with RhD-positive RBCs to maintain high anti-D titers as the main source of plasma for RhIG. There are no reports of transmission of hepatitis B virus, hepatitis C virus, or human immunodeficiency virus caused by RhIG manufactured in the United States, but since RhIG is manufactured from pooled human plasma there is a potential risk for transmission of infection. An additional safety issue relates to the lifelong risk, which occurs when an RhD-negative volunteer is intentionally alloimmunized to RhD to manufacture RhIG and subsequently requires a transfusion where RhD-negative RBCs are not readily available. The problem increases with travel to certain regions of Asia and Africa where RhD-negative blood is rare. The ethical issues are not only the unnecessary administration of a blood product, but also the source of human plasma containing high-titer anti-D that is required for manufacturing RhIG. Thus, the paid-donor market for anti-D is supported, in part, by unnecessary injections of RhIG.

Transfusion recipients

The Work Group recommends that *RHD* genotyping be performed when discordant RhD typing results are encountered and/or a serologic weak D is identified in a transfusion recipient. It anticipates that if this practice were implemented in the United States, a potential 17,520 transfusion recipients with a serologic weak D phenotype could be managed as RhD-positive, avoiding the transfusion of as many as 47,700 units of RhD-negative RBCs annually. The potentially decreased requirement for RhD-negative RBCs, if a complete phase-in for *RHD* genotyping could be achieved, was calculated as follows (Fig. 2). Approximately 13,600,000 units of RBCs were transfused to 5,000,000 recipients in the United States in 2011.¹³⁸ Of these 13,600,000 units, a minimum of 1,985,600 (14.6% × 13,600,000) are RhD-negative,¹³⁵ and of the 5,000,000 recipients, approximately 730,000 (14.6% × 5,000,000) are RhD-negative.¹³⁵ Thus, an average of 2.72

units of RhD-negative RBCs are transfused to each RhD-negative patient (1,985,000 ÷ 730,000). The same data for calculating the estimate for pregnant women (above) was used to calculate the 21,900 RhD-negative transfusion recipients who will express a serologic weak D phenotype (730,000 × 3.0%) and the 17,520 who will have a weak D type 1, 2, or 3, which could be managed safely as RhD-positive (730,000 × 3.0% × 80%). Also, those estimates were applied to calculate the 47,700 units of RhD-negative RBCs that would be transfused to these recipients who could be managed as RhD-positive (17,520 × 2.72). The Work Group appreciates that these calculations provide only a good faith estimate of the potential long-term impact of *RHD* genotyping on the requirements for RhIG and for collecting RhD-negative RBCs. The calculations do not account for the different requirements by geography, race, and ethnicity, as well as the many other factors that determine the requirements for RhD-negative RBCs for transfusion. Currently, recipients of emergent transfusion may require RBCs before the results of *RHD* genotyping would be available. However, for patients requiring chronic transfusion, at greatest risk for alloimmunization, the results of a once-in-a-lifetime *RHD* genotyping would ideally be available for all subsequent transfusions. The Work Group anticipates that manufacturers and reference laboratories will recognize the need for a more rapid turnaround of *RHD* genotyping results such that methods with quicker processing will evolve. Intra- and interorganizational integration of electronic medical records will facilitate recognition of persons with a serologic weak D phenotype and allow application of prior *RHD* genotyping results to selecting the most appropriate RhD type for transfusing RBCs.

CONCLUSION AND RECOMMENDATIONS

The Work Group recommends that *RHD* genotyping be performed whenever a discordant RhD typing result and/or a serologic weak D phenotype is detected in patients, including pregnant women, newborns, and potential transfusion recipients. It is anticipated that the immediate benefit will be fewer unnecessary injections of RhIG and increased availability of RhD-negative RBCs for transfusion.

Persons whose *RHD* genotype is weak D type 1, 2, or 3 should be managed as RhD-positive with regard to administration of RhIG and/or selection of blood components for transfusion. To facilitate implementation of this recommendation, the Work Group developed

an algorithm for resolving serologic weak D phenotype test results (Fig. 3). Phasing in *RHD* genotyping in clinical practice will be most effective if manufacturers of *RHD* genotyping assays and systems offer basic cost-effective tests designed to identify the most prevalent and clinically relevant *RHD* genotypes. The Work Group recognizes that most hospitals and health care facilities will not encounter a sufficient number of persons with a serologic weak D phenotype to support in-house *RHD* genotyping. In these situations, samples for *RHD* genotyping should be referred to a reference laboratory to promote standardization of laboratory methods and the economy of

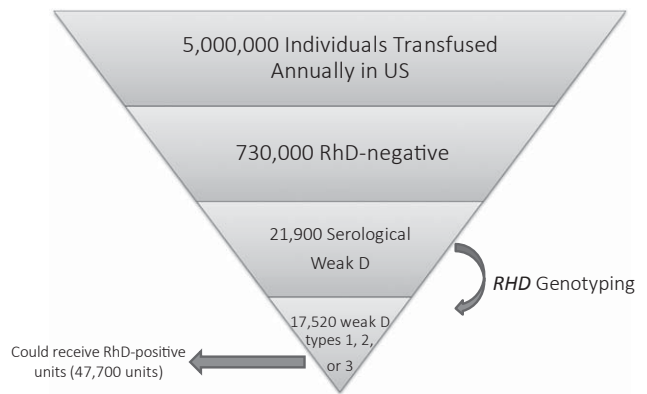


Fig. 2. Unnecessary transfusion of RhD-negative RBC units. Of 5,000,000 individuals transfused annually in the United States, an estimated 17,520 with a serologic weak D phenotype will, in the absence of indirect antiglobulin testing, be typed as RhD-negative. If their *RHD* genotype were determined, they could be managed safely as RhD-positive. Since the average number of RBC units is 2.7 per recipient, *RHD* genotyping could make 47,700 units of RhD-negative RBCs available to patients who require them.

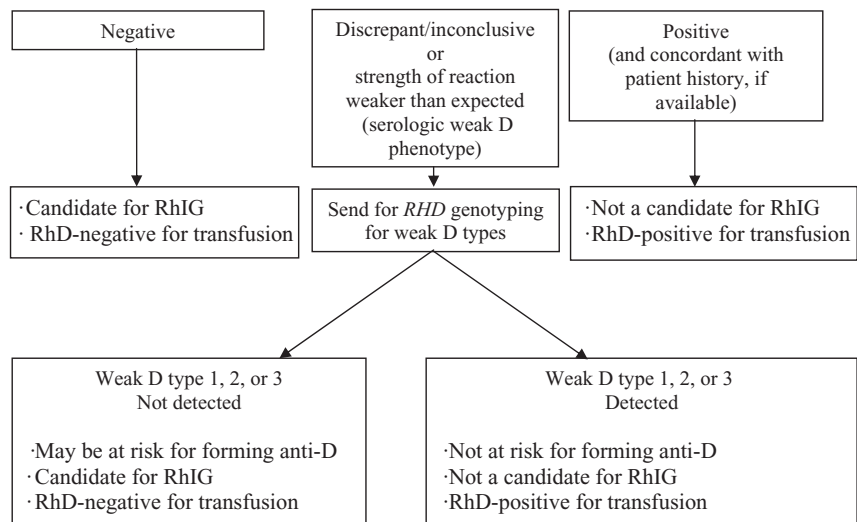


Fig. 3. Algorithm for resolving serologic weak D phenotype test results by *RHD* genotyping to determine candidacy for RhIG and RhD type for transfusions.

large-scale testing. Reference laboratories performing RBC genotyping services should offer tiered services, beginning with affordable first-tier testing, so that the most prevalent and clinically relevant *RHD* genotypes can be detected.

For women with a serologic weak D phenotype associated with *RHD* genotypes other than weak D type 1, 2, or 3, the Work Group recommends that these women receive conventional prophylaxis with RhIG, including postpartum RhIG if the newborn is RhD-positive or has a serologic weak D phenotype. Clinicians and investigators are encouraged to publish alloimmunization outcomes of pregnancies and transfusions of individuals with *RHD* genotypes for which the risk of RhD alloimmunization is unknown.

Finally, members of the Work Group emphasize the concept of a “phase-in” for implementing of these recommendations. We believe that it is time for *RHD* genotyping all patients whose routine RBC typing has resulted in detection of a serologic weak D phenotype. While recognizing the lack of comprehensive cost-benefit analyses, the Work Group concludes that it is time to begin to phase in selective *RHD* genotyping. It is the intent of this commentary to increase awareness of the available molecular science and promise of *RHD* genotyping and, thereby, to shorten the time for achieving the full benefits of a more comprehensive implementation of *RHD* genotyping. Phasing in *RHD* genotyping will apply modern genomic methods for more precise decision making in obstetric practice and transfusion medicine. It will foster the application of genomic science to promote more personalized and accurate medical care.¹²⁹

CONFLICT OF INTEREST

WAF receives royalties for *RHD* genotyping. GAD is named as an inventor of granted RBC genotyping European Patents Serial No. 2298784 and 2298785, currently owned by Canadian Blood Services. MAK receives financial support from Life Technologies for genotyping software development consulting, has received research support from BioArray, and has been on Immucor’s speakers bureau. RV receives research support from Fenwal. SGS, CMW, MD, STJ, LK, JTQ, and CDS have disclosed no conflicts of interest.

REFERENCES

Background

- Sandler SG, Roseff S, Dormen RE, et al. Policies and procedures related to testing for weak D phenotypes and administration of Rh immune globulin/Results and recommendations related to supplemental questions in the comprehensive transfusion medicine survey of the College of American Pathologists. *Arch Pathol Lab Med* 2014;138:620-5.
- Bowman J. Thirty-five years of Rh prophylaxis. *Transfusion* 2003;43:1661-6.
- Ceppellini R, Dunn LC, Turry M. An interaction between alleles at the Rh locus in man which weakens the reactivity of the *Rh₀* factor (*D^u*). *Proc Natl Acad Sci U S A* 1955;41:283-8.
- Stratton F. A new Rh allelomorph. *Nature* 1946;158:25-6.
- Mourant AE, Kopec AC, Domaniewska-Sobczak K. The distribution of the human blood groups and other polymorphisms. 2 ed. London: Oxford University Press; 1976.
- Salmon C, Cartron JP, Rouger P. The human blood groups. New York: Masson; 1984.
- Agre PC, Davies DM, Issitt PD, et al. A proposal to standardize terminology for weak D antigen. *Transfusion* 1992;32:86-7.
- Wagner FF, Kasulke D, Kerowgan M, et al. Frequencies of the blood groups ABO, Rhesus, D category VI, Kell, and of clinically relevant high-frequency antigens in South-Western Germany. *Infusionsther Transfusionsmed* 1995;22:285-90.
- Rouillac C, Gane P, Cartron JP, et al. Molecular basis of the altered antigenic expression of RhD in weak D (*D^u*) and RhC/e in *R^N* phenotypes. *Blood* 1996;87:4853-61.
- Huang CH. Molecular insights into the Rh protein family and associated antigens. *Curr Opin Hematol* 1997;4:94-103.
- Beckers EA, Faas BH, Ligthart P, et al. Lower antigen site density and weak D immunogenicity cannot be explained by structural genomic abnormalities or regulatory defects of the *RHD* gene. *Transfusion* 1997;37:616-23.
- Sandler SG, Gottschall JL. Postpartum Rh immunoprophylaxis. *Obstet Gynecol* 2012;120:1428-38.
- Argall CI, Ball JM, Trentelman E. Presence of anti-D antibody in the serum of a DU patient. *J Lab Clin Med* 1953;41:895-8.
- Weiner AS, Geiger J, Gordon EB. Mosaic nature of the Rho blood factor of human blood. *Exp Med Surg* 1957;15:75-82.
- White CA, Stedman CM, Frank S. Anti-D antibodies in D- and Du-positive women: a cause of hemolytic disease of the newborn. *Am J Obstet Gynecol* 1983;145:1069-75.
- Ostgård P, Fevang F, Komstad L. Anti-D in a “D-positive” mother giving rise to a severe hemolytic disease of the newborn. A dilemma in antenatal immunohaematological testing. *Acta Paediatr Scand* 1986;75:175-8.
- Mayne KM, Allen DL, Bowel PJ. Partial D women with anti-D alloimmunization in pregnancy. *Clin Lab Haematol* 1991;13:239-44.
- Domen RE, Hoetge GA. Alloanti-D following transfusion in patients with the weak D (Du) phenotype [abstract]. *Blood* 1997;90(Suppl 1, Pt 2):130b.

19. Brandstadter W, Brandstadter M. Morbus haemolyticus neonatorum durch anti-D bei faktor D^u der Mutter. *Zentralbl Gynakol* 1970;6:176-8.
20. Lacey PA, Caskey CR, Werner DJ, et al. Fatal hemolytic disease of the newborn due to anti-D in an Rh-positive DU variant mother. *Transfusion* 1983;23:91-4.
21. Simmons RT, Krieger VI. Anti-Rh (D) antibodies produced by isoimmunization in an Rh positive woman of the unusual genotype (CDue/CdE). *Med J Aust* 1960;2:1021-2.
22. Hill Z, Vacl J, Kalasová E, et al. Haemolytic disease of the newborn due to anti-D antibodies in a Du positive mother. *Vox Sang* 1974;27:92-4.
23. Zaino EC, Applewhaite F. Antibodies to part of the Rh0 antigen complex occurring in two women with Rh0 variants. *Transfusion* 1975;15:256-9.
24. Kimball MG, Andrews L, Konugres AA. Hemolytic disease of the newborn caused by anti-D in a Du positive woman [abstract]. *Proc Mass Assoc Blood Banks Ninth Annu Spring Semin* 1981;109.
25. Stedman CM, White CA. Fatal hydrops fetalis caused by anti-D in a mother with partial D. *Obstet Gynecol* 2004;104:194-5.
26. Cannon M, Pierce R, Taber EB, et al. Fatal hydrops fetalis caused by anti-D in a mother with partial D. *Obstet Gynecol* 2003;102:1143-5.
27. Kahwash E, Leonard J, Lockwood W. A 60-year-old Rh(D)-positive women with anti-D in her serum. *Lab Med* 2004;35:413-4.
28. Prasad MR, Krugh D, Rossi KQ, et al. Anti-D in Rh positive pregnancies. *Am J Obstet Gynecol* 2006;195:1158-62.
29. Yazer MH, Triulzi DJ. Detection of anti-D in D+ recipients transfused with D+ red blood cells. *Transfusion* 2007;47:2197-201.
30. Flegel WA, Gassner C, Müller TH, et al. The molecular basis of weak D. *Vox Sang* 1998;74(Suppl 1):55.
31. Wagner FF, Gassner C, Müller TH, et al. Molecular basis of weak D phenotypes. *Blood* 1999;93:385-93.
32. Hemker MB, Ligthart PC, Berger L, et al. DAR, a new RhD variant involving exons 4, 5, and 7, often in linkage with ceAR, a new Rhce variant frequently found in African blacks. *Blood* 1999;94:4337-42.
33. Wagner FF, Frohmajer A, Ladewig B, et al. Weak D alleles express distinct phenotypes. *Blood* 2000;95:2699-708.
34. Flegel WA, Khull S, Wagner FF. Primary anti-D immunization by weak D type 2 RBC. *Transfusion* 2000;40:428-34.
35. Avent ND, Liu W, Scott ML, et al. Site directed mutagenesis of the human Rh D antigen: molecular basis of D epitopes. *Vox Sang* 2000;78(Suppl 2):83-9.
36. Müller TH, Wagner FF, Trockenbacher A, et al. PCR screening for common weak D types shows different distributions in three Central European populations. *Transfusion* 2001;41:45-52.
37. Wagner FF, Ernst M, Sonneborn HH, et al. A D(V)-like phenotype is obliterated by A226P in the partial D DBS. *Transfusion* 2001;41:1052-8.
38. Wagner FF, Frohmajer A, Flegel WA. RHD positive haplotypes in D negative Europeans. *BMC Genet* 2001;2:10.
39. Legler TJ, Maas JH, Köhler M, et al. RHD sequencing: a new tool for decision making on transfusion therapy and provision of Rh prophylaxis. *Transfus Med* 2001;11:383-8.
40. Wagner FF, Eicher NI, Jorgensen JR, et al. DNB: a partial D with anti-D frequent in Central Europe. *Blood* 2002;100:2253-6.
41. Shao CP, Maas JH, Su YQ, et al. Molecular background of Rh D-positive, D-negative, D(el) and weak D phenotypes in Chinese. *Vox Sang* 2002;83:156-61.
42. Flegel WA, Curin-Serbec V, Delamaire M, et al. Section 1B: Rh flow cytometry. Coordinator's report. Rhesus index and antigen density: an analysis of the reproducibility of flow cytometric determination. *Transfus Clin Biol* 2002;9:33-44.
43. Wagner FF, Ladewig B, Flegel WA. The *RHCE* allele *ceRT*: D epitope 6 expression does not require d-specific amino acids. *Transfusion* 2003;43:1248-54.
44. Wagner FF, Moulds JM, Tounkara A, et al. *RHD* allele distribution in Africans of Mali. *BMC Genet* 2003;4:14.
45. Ansart-Pirenne H, Asso-Bonnet PY, Le Pennec M, et al. RhD variants in whites; consequences for checking clinically relevant alleles. *Transfusion* 2004;44:1282-6.
46. Denomme GA, Wagner FF, Fernandez BJ, et al. Partial, weak D types, and novel *RHD* alleles among 33, 864 multiethnic patients: implications for anti-D alloimmunization and prevention. *Transfusion* 2005;45:1554-60.
47. Wagner FF, Moulds JM, Flegel WA. Genetic mechanisms of *Rhesus box* variation. *Transfusion* 2005;45:338-44.
48. Wagner T, Körmöczi GF, Buchta C, et al. Anti-D immunization by DEL red blood cells. *Transfusion* 2005;45:520-6.
49. Chen Q, Flegel WA. Random survey for *RHD* alleles among D+ European persons. *Transfusion* 2005;45:1183-91.
50. Yasuda H, Ohto H, Ishikawa Y. Secondary anti-D immunization by Del red blood cells. *Transfusion* 2005;45:1581-4.
51. Doescher A, Flegel WA, Petershofen EK, et al. Weak D type I.1 exemplifies another complexity in weak D genotyping. *Transfusion* 2005;45:1568-73.
52. Esteban R, Montero R, Flegel WA, et al. The D category VI type 4 allele is prevalent in the Spanish population. *Transfusion* 2006;46:616-23.
53. Flegel WA, Wagner FF, Chen Q, et al. The *RHCE* allele *ceCF*: the molecular basis of Crawford (RH43). *Transfusion* 2006;46:1334-42.
54. Lüttringhaus TA, Cho D, Ryang DW, et al. An easy *RHD* genotyping strategy for D- East Asian persons applied to Korean blood donors. *Transfusion* 2006;46:2128-37.

55. Flegel WA. How I manage donors and patients with a weak D phenotype. *Curr Opin Hematol* 2006;13:476-83.
56. Yu X, Wagner FF, Witter B, et al. Outliers in RhD membrane integration are explained by variant *RH* haplotypes. *Transfusion* 2006;46:1343-51.
57. Avent ND, Martinez A, Flegel WA, et al. The BloodGen project: toward mass scale comprehensive genotyping of blood donors in the European Union and beyond. *Transfusion* 2007;47(Suppl 1):40S-6S.
58. Flegel WA. Blood group genotyping in Germany. *Transfusion* 2007;47(Suppl 1):47S-53S.
59. Yan L, Wu J, Zhu F, et al. Molecular basis of D variants in Chinese persons. *Transfusion* 2007;47:471-7.
60. Le Maréchal C, Guerry C, Benech C, et al. Identification of 12 novel *RHD* alleles in western France by denaturing high-performance liquid chromatography analysis. *Transfusion* 2007;47:858-63.
61. Polin H, Danzer M, Hofer K, et al. Effective molecular *RHD* typing strategy for blood donations. *Transfusion* 2007;47:1350-5.
62. Flegel WA, von Zabern I, Doescher A, et al. DCS-1, DCS-2 and DFV share amino acid substitutions at the extracellular RhD protein vestibule. *Transfusion* 2008;48:25-33.
63. Christiansen M, Samuelsen B, Christiansen L, et al. Correlation between serology and genetics of weak D types in Denmark. *Transfusion* 2008;48:187-93.
64. Flegel WA, von Zabern I, Wagner FF. Six years' experience performing *RHD* genotyping to confirm D- red blood cell units in Germany for preventing anti-D immunization. *Transfusion* 2009;49:465-71.
65. Touinssi M, Chapel-Fernandes S, Granier T, et al. Molecular analysis of inactive and active *RHD* alleles in native Congolese cohorts. *Transfusion* 2009;49:1353-60.
66. Flegel WA, von Zabern I, Doescher A, et al. D variants at the RhD vestibule in the weak D type 4 and Eurasian D clusters. *Transfusion* 2009;49:1059-69.
67. Bugert P, Scharberg EA, Geisen C, et al. RhCE protein variants in Southwestern Germany detected by serological routine testing. *Transfusion* 2009;49:1793-802.
68. Avent ND, Martinez A, Flegel WA, et al. The Bloodgen Project of the European Union, 2003-2009. *Transfus Med Hemother* 2009;36:162-7.
69. Wang D, Lane C, Quillen K. Prevalence of *RHD* variants, confirmed by molecular genotyping, in a multiethnic prenatal population. *Am J Clin Pathol* 2010;134:438-42.
70. Schmid P, von Zabern I, Scharberg EA, et al. Specific amino acid substitutions cause distinct expression of JAL (RH48) and JAHK (RH53) antigens in RhCE and not in RhD. *Transfusion* 2010;50:267-9.
71. McGann H, Wenk RE. Alloimmunization to the D antigen by a patient with weak D type 21. *Immunohematology* 2010;26:27-9.
72. Shao CP. Transfusion of RhD-positive blood in "Asian type" DEL recipients. *N Engl J Med* 2010;362:472-3.
73. Krog GR, Clausen FB, Berkowicz Jørgensen L, et al. Is current serologic RhD typing of blood donors sufficient for avoiding immunization of recipients? *Transfusion* 2011;51:2278-85.
74. Szczepura S, Osipenko L, Freeman K. A new fetal RHD genotyping test: costs and benefits of mass testing to target antenatal anti-D prophylaxis in England and Wales. *BMC Pregnancy Childbirth* 2011;11:5.
75. Pham BN, Roussel M, Peyrard T, et al. Anti-D investigations in individuals expressing weak D Type 1 or weak D Type 2: allo- or autoantibodies? *Transfusion* 2011;51:2679-85.
76. Chen Q, Li M, Li M, et al. Molecular basis of weak D and DEL in Han population in Anhui Province, China. *Chin Med J (Engl)* 2012;125:3251-5.
77. Brajovich ME, Boggione CT, Biondi CS, et al. Comprehensive analysis of *RHD* alleles in Argentineans with variant D phenotypes. *Transfusion* 2012;52:389-96.
78. Fichou Y, Chen JM, Le Maréchal C, et al. Weak D caused by a founder deletion in the *RHD* gene. *Transfusion* 2012;52:2348-55.
79. Srijinda S, Suwanasophon C, Visawapoka U, et al. RhC[sic] phenotyping, adsorption/elution test, and SSP-PCR: the combined test for D-eluate phenotype screening in Thai RhD-negative blood donors. *ISRN Hematol* 2012;2012:358316.
80. Cruz BR, Chiba AK, Moritz E, et al. *RHD* alleles in Brazilian blood donors with weak D or D-negative phenotypes. *Transfus Med* 2012;22:84-9.
81. Moussa H, Tsochandaridis M, Chakroun T, et al. Molecular background of D-negative phenotype in the Tunisian population. *Transfus Med* 2012;22:192-8.
82. Kacem N, Chakroun T, Moussa H, et al. *RHD* zygosity assignments based on most probable genotype and hybrid *Rhesus box* detection in Tunisia. *Transfus Med* 2012;22:362-6.
83. Hussein E, Teruya J. Weak D types in the Egyptian population. *Am J Clin Pathol* 2013;139:806-11.
84. Martin FO, de Menezes SS, Chiba AK, et al. *RHD* gene polymorphisms in alloimmunized RhD-negative individuals with high rate of racial admixture. *Transfus Apher Sci* 2013;48:113-6.
85. Fichou Y, Le Maréchal C, Jamet D, et al. Establishment of a medium-throughput approach for the genotyping of *RHD* variants and report of nine novel rare alleles. *Transfusion* 2013;53:1821-8.
86. Pham BN, Roussel M, Gien D, et al. Molecular analysis of patients with weak D and serologic analysis of those with anti-D (excluding type 1 and type 2). *Immunohematology* 2013;29:55-62.
87. Orzińska A, Guz K, Polin H, et al. *RHD* variants in Polish blood donors routinely typed as D-. *Transfusion* 2013;53(Suppl 2):2945-53.
88. Abdelrazik AM, Elshafie SM, Ezzat Ahmed GM, et al. Combining serology and molecular typing of weak D role in

- improving D typing strategy in Egypt. *Transfusion* 2013; 53(Suppl 2):2940-4.
89. Chou ST, Jackson T, Vege S, et al. High prevalence of red blood cell alloimmunization in sickle cell disease despite transfusion from Rh-matched minority donors. *Blood* 2013;122:1062-71.
 90. Reid ME, Halter Hipsky C, Hue-Roye K, et al. Genomic analysis of RH alleles to improve transfusion therapy in patients with sickle cell disease. *Blood Cells Mol Dis* 2014; 52:195-202.
 91. Ouchari M, Chakroun T, Abdelkefi S, et al. Anti-D- auto-immunization in a patient with weak D type 4.0. *Transfus Clin Biol* 2014;12:43-6.
 92. Gu J, Wang DX, Shao CP, et al. Molecular basis of DEL phenotype in the Chinese population. *BMC Med Genet* 2014; 15:54.
- ### Reviews, Editorials and Commentaries
93. Flegel WA, Wagner FF, Müller TH, et al. Rh phenotype prediction by DNA typing and its application to practice. *Transfus Med* 1998;8:281-302.
 94. Flegel WA, Wagner FF. Molecular genetics of RH. *Vox Sang* 2000;78(Suppl 2):109-15.
 95. Flegel WA, Wagner FF. Molekularbiologie von partial D und weak D: Bedeutung für die Arbeit in der Blutzentrale. *MTA Dialog* 2002;8:662-5.
 96. Avent ND, Reid M. The Rh blood group system: a review. *Blood* 2000;15:375-87.
 97. Flegel WA, Wagner FF. Molecular biology of partial D and weak D: implications for blood bank practice. *Clin Lab* 2002;48:53-9.
 98. Westhoff CM. The Rh blood group system in review: a new face for the next decade. *Transfusion* 2004;44:1663-73.
 99. Pisacka M, Vytiskova J, Zavadil J, et al. Slabé a variantní RhD antigeny—charakteristiky a frekvence typu, vyšetřovaných v letech 1997-2002 v Referenční laboratorii pro imunohematologii. *Transfuzie A Hematologie Dnes* 2004;9:37-47.
 100. Wagner FF, Flegel WA. Review: the molecular basis of the Rh blood group phenotypes. *Immunohematology* 2004; 20:23-36.
 101. Flegel WA. Homing in on D antigen immunogenicity. *Transfusion* 2005;45:466-8.
 102. Garratty G. Do we need to be more concerned about weak D antigens? *Transfusion* 2005;45:1547-51.
 103. Westhoff CM. Review: the Rh blood group D antigen . . . dominant, diverse, difficult. *Immunohematology* 2005;21: 155-63.
 104. Flegel WA. Molecular genetics of RH and its clinical application. *Transfus Clin Biol* 2006;13:4-12.
 105. Engelfriet CP, Reesink HW. Testing for weak D. *Vox Sang* 2006;90:140-53.
 106. Noizat-Pirenne F, Verdier M, Lejealle A, et al. Weak D phenotypes and transfusion safety: where do we stand in daily practice? *Transfusion* 2007;47:1616-20.
 107. Westhoff CM. The structure and function of the Rh antigen complex. *Semin Hematol* 2007;44:42-50.
 108. Westhoff CM. Rh complexities: serology and DNA genotyping. *Transfusion* 2007;47:17S-22S.
 109. Flegel WA, Denomme GA, Yazer MH. On the complexity of D antigen typing: a handy decision tree in the age of molecular blood group diagnostics. *J Obstet Gynaecol Can* 2007;29:746-52.
 110. Westhoff CM. Molecular genotyping for RHD: what (not) to do? *Transfusion* 2007;47:1337-9.
 111. Flegel WA. The genetics of the Rhesus blood group system. *Dtsch Arztebl* 2007;104:A651-7.
 112. Flegel WA, Wagner FF. Genotyping of red blood cell, granulocyte and platelet antigens: current applications in the German-speaking countries. In: Scharf RE, editor. *Progress and challenges in transfusion medicine, hemostasis and hemotherapy*. Freiburg: Karger; 2008. p. 189-98.
 113. Westhoff CM. The potential of blood group genotyping for transfusion medicine practice. *Immunohematology* 2008;24:190-5.
 114. Denomme GA, Dake LR, Vilensky D, et al. Rh discrepancies caused by variable reactivity of partial and weak D types with different serologic techniques. *Transfusion* 2008;48:473-8.
 115. Denomme GA, Flegel WA. Applying molecular immunohematology discoveries to standards of practice in blood banks: now is the time. *Transfusion* 2008;48: 2461-75.
 116. Flegel WA. Molecular genetics and clinical applications for RH. *Transfus Apher Sci* 2011;44:81-9.
 117. Sandler SG, Li W, Langeberg A, et al. New laboratory procedures and Rh blood type changes in a pregnant woman. *Obstet Gynecol* 2012;119:426-8.
 118. Wagner FF. RHD PCR of D-negative blood donors. *Transfus Med Hemather* 2013;40:172-81.
 119. Daniels G. Variants of RhD-current testing and clinical consequences. *Br J Haematol* 2013;161:461-7.
 120. Flegel WA, Roseff S, Tholpady A. Phasing-in RHD genotyping. *Arch Pathol Lab Med* 2014;138: 585-8.
 121. Wagner FF, Ladewig B, Angert KS, et al. The DAU allele cluster of the RHD gene. *Blood* 2002;100:306-11.
 122. Flegel WA. Are weak D RBCs really immunogenic? *Transfusion* 2006;46:1063-4.
 123. Wolinsky H. A mythical beast: increased attention highlights the hidden wonders of chimeras. *EMBO Rep* 2007;8: 212-4.
 124. Flegel WA. Will MICA glitter for recipients of kidney transplants? *N Engl J Med* 2007;357:1337-9.
 125. Quill E. Blood-matching goes genetic. *Science* 2008;319: 1478-9.

126. Ramsey G. Q&A: giving Rh immune globulin to obstetrical patients with weak-D phenotypes. *AABB News* 2011;6-7.
127. Flegel WA, Denomme GA. Allo- and autoanti-D in weak D types and in partial D. *Transfusion* 2012;52:2067-9.
128. von Zabern I, Wagner FF, Moulds JM, et al. D category IV: a group of clinically relevant and phylogenetically diverse partial D. *Transfusion* 2013;53(Suppl 2):2960-73.
129. Willard H, Ginsburg GS. *Genomic and personalized medicine*. 1st ed. Philadelphia (PA): Elsevier; 2009.

Technical Resources

130. Konugres AA, Polesky HF, Walker RH. Rh immune globulin and the Rh-positive, Du variant mother. *Transfusion* 1982;22:76-7.
131. Lowe AD, Green SM, Voak D, et al. A human-human monoclonal anti-D by direct fusion with a lymphoblastoid line. *Vox Sang* 1986;51:212-6.
132. Jones J, Scott ML, Voak D. Monoclonal anti-D specificity and Rh D structure: criteria for selection of monoclonal anti-D reagents for routine typing of patients and donors. *Transfus Med* 1995;5:171-84.
133. Jones J, Filbey D. Selection of monoclonal antibodies for the identification of D variants: ability to detect weak D and to split epD2, epD5 and epD6/7. *Vox Sang* 1996;70:173-9.
134. Scott ML, Voak D, Jones JW, et al. A structural model for 30 Rh D epitopes based on serological and DNA sequence data from partial D phenotypes. *Transfus Clin Biol* 1996;3:391-6.
135. Garratty G, Glynn SA. McEntire for the Retrovirology Epidemiology Donor Study. ABO and Rh(D) phenotype frequencies of different racial/ethnic groups in the United States. *Transfusion* 2004;44:703-6.
136. Jenkins CM, Johnson ST, Bellissimo DB, et al. Incidence of weak D in blood donors typed as D positive by the Olympus PK 7200. *Immuno-hematology* 2005;21:152-4.
137. Judd WD, Moulds M, Schlanser G. Reactivity of FDA-approved anti-D reagents with partial D red blood cells. *Immuno-hematology* 2005;21:146-8.
138. Whitaker BI, Hinkins S. The 2011 national blood collection and utilization survey report. US Department of Health and Human Services, Rockville, Maryland [cited 2014 Nov 20]. Available from: <http://www.hhs.gov/ash/bloodsafety/2011-nbcus.pdf>.
139. Hawk AF, Chang EY, Shields SM, et al. Costs and clinical outcomes of noninvasive fetal RhD typing for targeted prophylaxis. *Obstet Gynecol* 2013;122:579-85.
140. US Department of Health and Human Services, Centers for Disease Control and Prevention, National Center for Health Statistics, National Vital Statistics System. Births: preliminary data for 2012. *National Vital Statistics Reports* 2013;62(3).
141. Flegel WA, Chiosea I, Sachs UJ, et al. External quality assessment in molecular immuno-hematology: the INSTAND proficiency test program. *Transfusion* 2013;53(Suppl 2):2850-8.
142. Kim KH, Kim KE, Woo KS, et al. Primary anti-D immunization by DEL red blood cells. *Korean J Lab Med* 2009;29:361-5.

Standards and Guidelines

143. Scientific Committee of the Joint Blood Council, Standards Committee of the American Association of Blood Banks. *Standards for a blood transfusion service*. 1st ed. Washington, DC: Joint Blood Council; 1958.
144. Oberman HA, editor. *Standards for blood banks and transfusion services*. 10th ed. Washington, DC: American Association of Blood Banks; 1981.
145. American College of Obstetricians and Gynecologists. The selective use of Rho (D) immune globulin (RhIG). *Technical Bulletin #61*, 1981.
146. American College of Obstetricians and Gynecologists. *Prevention of Rh D alloimmunization/number 4*, May 1999 (Replaces Educational Bulletin Number 147, October 1990). *Int J Gynecol Obstet* 1999;66:63-70.
147. Fridley J, editor. *Standards for blood banks and transfusion services*. 22th ed. Bethesda (MD): American Association of Blood Banks; 2003.
148. Fung MK, Grossman BJ, Hillyer CD, et al., editors. *Technical manual*. 18th ed. Bethesda (MD): American Association of Blood Banks; 2014.
149. Levitt J, editor. *Standards for blood banks and transfusion services*. 29th ed. Bethesda (MD): American Association of Blood Banks; 2014. ■