

Simplur is joining the W2O family

#AABBPEPTALK Transcript

Healthcare social media transcript of the #AABBPEPTALK hashtag.

Fri, April 10th 2020, 1:00PM – Mon, April 13th 2020, 6:35PM (America/New_York).

See #AABBPEPTALK Influencers/Analytics.



Rich Miller-Murphy @NYBCmiller

4 days ago

RT @AABB: Let's talk #COVID19 convalescent plasma! @BethShaz and @Cohn_MD will lead an #AABBPEptalk at 1:00 pm EST today about how blood co...



Danielle Maracaja, MD, MHS @MaracajaDLV

4 days ago

@AABB Hi, this is Danielle Maracaja, Transfusion Medicine fellow @Yale_LabMed #AABBPEptalk



AABB @AABB

4 days ago

👏 Hello everyone! Thanks for joining today's #AABBPEptalk with special guests @BethShaz and @Cohn_MD to discuss #COVID19 convalescent plasma (CCP). Please let us know what you do and where you're tweeting from. Feel free to 🏷 tag a friend to let them know we're starting now!



KimDrd @batchuy

4 days ago

RT @AABB: 👏 Hello everyone! Thanks for joining today's #AABBPEptalk with special guests @BethShaz and @Cohn_MD to discuss #COVID19 convales...



Sdandra @Sdandra2

4 days ago

RT @AABB: 👏 Hello everyone! Thanks for joining today's #AABBPEptalk with special guests @BethShaz and @Cohn_MD to discuss #COVID19 convales...



Beth Shaz @BethShaz

4 days ago

Hi all- this is Beth Shaz tweeting from my parents' house outside of NYC #AABBPEptalk



**Kerri Wachter** @knwachter

4 days ago

RT @AABB: 🙌 Hello everyone! Thanks for joining today's #AABBPEptalk with special guests @BethShaz and @Cohn_MD to discuss #COVID19 convales...

**Enrique** @Dicebamus

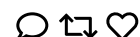
4 days ago

RT @AABB: 🙌 Hello everyone! Thanks for joining today's #AABBPEptalk with special guests @BethShaz and @Cohn_MD to discuss #COVID19 convales...

**Aaron D. Shmookler** @AShmooklerMD

4 days ago

RT @AABB: 🙌 Hello everyone! Thanks for joining today's #AABBPEptalk with special guests @BethShaz and @Cohn_MD to discuss #COVID19 convales...

**Magali J Fontaine** @MagaliJFontain1

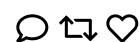
4 days ago

RT @AABB: How are facilities preparing to collect #COVID19 convalescent plasma? Join @BethShaz and @Cohn_MD for an #AABBPEptalk focusing on...

**Brian Easley** @TofuGopher

4 days ago

@AABB @BethShaz @cohn_md @rita_tyler come and join the #AABBPEptalk

**Claudia Cohn MD** @cohn_md

4 days ago

@AABB @BethShaz Hi everyone. This is Claudia Cohn tweeting from St. Paul in the Twin Cities #AABBPEptalk

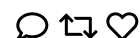
**Med. Transfusional** @TransfusionMed

4 days ago

RT @AABB: 🙌 Hello everyone! Thanks for joining today's #AABBPEptalk with special guests @BethShaz and @Cohn_MD to discuss #COVID19 convales...

**AABB** @AABB

4 days ago

RT @AShmooklerMD: All cozy and setup to have my world ROCKED by a timely #AABBPEptalk on convalescent plasma #COVID19 <https://t.co/dueJlaOS...>**Héctor Guidos** @HectorGuidos

4 days ago

@Marce_ca1





Cathy Mazzei @ChefCatMaz
@AABB @BethShaz @cohn_md #AABBPEPtalk

4 days ago



Dave Booth @gdavidbooth
This is Dave Booth participating from the Twin Cities #AABBPEPtalk

4 days ago



Justin Kreuter, MD @KreuterMD
RT @AABB: Ten minutes to go! You will not want to miss today's #AABBPEPtalk with @BethShaz and @Cohn_MD focusing on the leading role the bl...

4 days ago



Alma de Soa @SoaSylvi
@AABB @BethShaz @cohn_md 🇨🇱 Sylvana de Chile, trabajo en un servicio de medicina transfusional. #AABBPEPtalk

4 days ago



AABB @AABB
Q1: Excited to have many #teamblood representatives joining us today. Here's the first question. What steps is your facility taking (or has taken) to prepare for a CCP collection program? Please remember to include A1 and #AABBPEPtalk in your answer.
<https://t.co/Y6kntSZ2jt>

4 days ago



KimDrd @batchuy
RT @AABB: Q1: Excited to have many #teamblood representatives joining us today. Here's the first question. What steps is your facility taki...

4 days ago



Justin Kreuter, MD @KreuterMD
@AABB @BethShaz @cohn_md Hi #AABBPEPtalk, I'm Justin, joining/multitasking from Minnesota! <https://t.co/FMBIYCVQI2>

4 days ago



Kerri Wachter @knwachter
RT @AABB: Q1: Excited to have many #teamblood representatives joining us today. Here's the first question. What steps is your facility taki...

4 days ago



AABB @AABB
RT @KreuterMD: @AABB @BethShaz @cohn_md Hi #AABBPEPtalk, I'm Justin, joining/multitasking from Minnesota! <https://t.co/FMBIYCVQI2>

4 days ago



**Aqeel Alrooqy** @AqeelAlRoqy

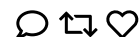
4 days ago

@AABB @BethShaz @cohn_md 🙌 Hi, this is Aqeel from Saudi arabia, Johns Hopkins aramco healthcare. Hope this helps us all to overcome #Covid19 #AABBPEPtalk

**Dana Bostic** 🙌❤️ @ThatLabChick

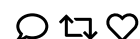
4 days ago

@AABB @BethShaz @cohn_md Greetings! Asst Professor in the CLS department @KUMedCenter w/ a love 4 #blooducation ❤️ I am tweeting from #KansasCity in Kansas, not Missouri 😊 Cheers to our laboratory colleagues as we approach lab week 🙌 #WeSaveLivesEveryday #Lab4Life #AABBPEPtalk @Leah4Lab @Lady_Rennagade <https://t.co/vABV0WvGRM>

**Justin Kreuter, MD** @KreuterMD

4 days ago

RT @AABB: 🙌 Hello everyone! Thanks for joining today's #AABBPEPtalk with special guests @BethShaz and @Cohn_MD to discuss #COVID19 convales...

**Joyeeh de Castro** @joyeeh_decastro

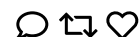
4 days ago

#AABBPEPtalk Negros Occidental, Philippines 💜

**AABB** @AABB

4 days ago

RT @ThatLabChick: @AABB @BethShaz @cohn_md Greetings! Asst Professor in the CLS department @KUMedCenter w/ a love 4 #blooducation ❤️ I am t...

**Dana Bostic** 🙌❤️ @ThatLabChick

4 days ago

RT @AABB: Q1: Excited to have many #teamblood representatives joining us today. Here's the first question. What steps is your facility taki...

**Justin Kreuter, MD** @KreuterMD

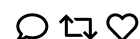
4 days ago

RT @AABB: Q1: Excited to have many #teamblood representatives joining us today. Here's the first question. What steps is your facility taki...

**Beth Shaz** @BethShaz

4 days ago

A1: New York Blood Center has been collecting and distributing CCP for a couple of weeks. We had to work with our partner hospitals on proofing and testing of donors. We've ramped up capacity and are recruiting our own donors; public inventory will soon be available. #AABBPEPtalk



**Aaron D. Shmookler** @AShmooklerMD

4 days ago

@AABB A1: We're part of the Expanded Access to Convalescent Plasma protocol
<https://t.co/4Nac9ipdJz> #AABBPEPtalk

**Amy Curran** @DrGsLabRat

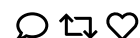
4 days ago

@AABB @BethShaz @cohn_md First time tweeter. Amy Curran, cell therapy processing.
 In Oak Ridge, TN. #AABBPEPtalk

**Claudia Cohn MD** @cohn_md

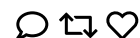
4 days ago

@AABB A1: The University of Minnesota does not have its own donor center; however,
 we are taking steps to encourage patients recovering from #COVID19 to donate at a
 local center. #AABBPEPtalk

**Enrique S** @esalinas1966

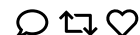
4 days ago

#AABBPEPTALK@AABB hello everyone, Enrique from El Salvador

**Kerri Wachter** @knwachter

4 days ago

RT @BethShaz: A1: New York Blood Center has been collecting and distributing CCP for
 a couple of weeks. We had to work with our partner hos...

**AABB** @AABB

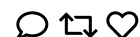
4 days ago

RT @BethShaz: A1: New York Blood Center has been collecting and distributing CCP for
 a couple of weeks. We had to work with our partner hos...

**AABB** @AABB

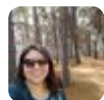
4 days ago

RT @cohn_md: @AABB A1: The University of Minnesota does not have its own donor
 center; however, we are taking steps to encourage patients r...

**Nora Ratcliffe** @NoraRatcliffe

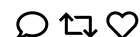
4 days ago

RT @AABB: Let's talk #COVID19 convalescent plasma! @BethShaz and @Cohn_MD will
 lead an #AABBPEPtalk at 1:00 pm EST today about how blood co...

**Sdandra** @Sdandra2

4 days ago

@AABB @BethShaz @cohn_md Hi! , I am Sandra Cádiz, Medical Technologist of Blood
 Bank, tweeting from Santiago , Chile. #AABBPEPtalk





Kerri Wachter @knwachter

4 days ago

What are some of the challenges that you've encountered in recruiting and screening/confirming eligibility of #Covid19 CCP donors? #AABBPEPtalk



Kerri Wachter @knwachter

4 days ago

RT @cohn_md: @AABB A1: The University of Minnesota does not have its own donor center; however, we are taking steps to encourage patients r...



Claudia Cohn MD @cohn_md

4 days ago

@AShmooklerMD @AABB Expanded access is the pathway the University of Minnesota is using as well. #AABBPEpTalk



AABB @AABB

4 days ago

@TakeAmericaForw @BethShaz @cohn_md Thank you so much for joining us! Please use the #AABBPEPtalk in your tweets so all participants can see them. :)



Kerri Wachter @knwachter

4 days ago

RT @cohn_md: @AShmooklerMD @AABB Expanded access is the pathway the University of Minnesota is using as well. #AABBPEpTalk



Lauren A. Crowder @SteelCrowder

4 days ago

@AABB @BethShaz @cohn_md Hi everyone on the #AABBPEPtalk! Just your neighborhood #epidemiologist tweeting to you from Sterling, VA. #RedCrossScience #WFH



Aaron D. Shmookler @AShmooklerMD

4 days ago

@cohn_md @AABB Is there any possibility to setup something emergently with the FDA where one could maybe ask for a variance to establish a means of collecting donors specifically for convalescent plasma? #AABBPEPtalk



Nour AlMozain @NourAlmozain

4 days ago

@cohn_md @AABB A1: we have quarantine that belongs to the university , we will start recruiting donors from this who were admitted or quarantined! #AABBPEPtalk



**Kerri Wachter** @knwachter

4 days ago

RT @ASHmooklerMD: @cohn_md @AABB Is there any possibility to setup something emergently with the FDA where one could maybe ask for a varian...

**Kerri Wachter** @knwachter

4 days ago

RT @NourAlmozain: @cohn_md @AABB A1: we have quarantine that belongs to the university , we will start recruiting donors from this who were...

**John Conway** @JohnCConway

4 days ago

RT @BethShaz: A1: New York Blood Center has been collecting and distributing CCP for a couple of weeks. We had to work with our partner hos...

**AABB** @AABB

4 days ago

RT @cohn_md: @ASHmooklerMD @AABB Expanded access is the pathway the University of Minnesota is using as well. #AABBPEptalk

**maxberro** @maxberro1

4 days ago

@AABB A1: we are enrolling possible donors and desveloping our own protocol. #AABBPEptalk

**Beth Shaz** @BethShaz

4 days ago

New York Blood Center and other blood centers are preparing to supply through this protocol as well. #AABBPEptalk

**Kerri Wachter** @knwachter

4 days ago

RT @maxberro1: @AABB A1: we are enrolling possible donors and desveloping our own protocol. #AABBPEptalk

**AABB** @AABB

4 days ago

RT @ASHmooklerMD: @cohn_md @AABB Is there any possibility to setup something emergently with the FDA where one could maybe ask for a varian...

**Kerri Wachter** @knwachter

4 days ago

RT @BethShaz: New York Blood Center and other blood centers are preparing to supply through this protocol as well. #AABBPEptalk

**Enrique S** @esalinas1966

4 days ago

#AABBPEptalk someone can share the protocolos are already using?

**Alliance for Community Transfusion Services (ACTS)** @ACTSAlliance

4 days ago

Nelson Hellwig of the ACTS Alliance of community blood centers here, tweeting from Louisiana! Looking forward to learning more today from this amazing group of professionals! #AABBPEptalk

**AABB** @AABB

4 days ago

RT @BethShaz: New York Blood Center and other blood centers are preparing to supply through this protocol as well. #AABBPEPtalk

**Kristin Sticco, DO MS** @ksticcoMD

4 days ago

@AABB A1: We do not have a donor room, so we are collaborating with the NYBC. #AABBPEPtalk

**AABB** @AABB

4 days ago

RT @NourAlmozain: @cohn_md @AABB A1: we have quarantine that belongs to the university , we will start recruiting donors from this who were...

**Kerri Wachter** @knwachter

4 days ago

RT @ksticcoMD: @AABB A1: We do not have a donor room, so we are collaborating with the NYBC. #AABBPEPtalk

**mariaroussakis950@gmail.com** @medlabmaria

4 days ago

@AABB In Canada, blood collection is done by @CanadasLifeline (or @HemaQuebec). They are currently in the process of beginning a clinical trial on #convalescentplasma for #COVID19 patients. This is being led by @arnolddma1 at @Mac_Transfusion. #AABBPEPtalk <https://t.co/dBCV4kLNLR>

**Aaron D. Shmookler** @AShmooklerMD

4 days ago

@knwachter Ethical question: would/could the donor's plasma come back to the hospital where the patient may have been tested and/or treated? #AABBPEPtalk

**Kerri Wachter** @knwachter

4 days ago

RT @AShmooklerMD: @knwachter Ethical question: would/could the donor's plasma come back to the hospital where the patient may have been tes...

**AABB** @AABB

4 days ago

RT @medlabmaria: @AABB In Canada, blood collection is done by @CanadasLifeline (or @HemaQuebec). They are currently in the process of begin...

**Dana Bostic** 🐘❤️ @ThatLabChick

4 days ago

@cohn_md @AABB A1: We're in a similar position. We don't have our own donor center onsite but working collaboratively w/ @CommBloodCtrKC Currently, I am not aware of current measures towards encouraging patients who have recovered from #COVID19 to donate blood w/ local centers. #AABBPEPtalk

**Kerri Wachter** @knwachter

4 days ago

RT @medlabmaria: @AABB In Canada, blood collection is done by @CanadasLifeline (or @HemaQuebec). They are currently in the process of begin...

**AABB** @AABB

4 days ago

RT @ThatLabChick: @cohn_md @AABB A1: We're in a similar position. We don't have our own donor center onsite but working collaboratively w/...

**Kerri Wachter** @knwachter

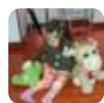
4 days ago

RT @ThatLabChick: @cohn_md @AABB A1: We're in a similar position. We don't have our own donor center onsite but working collaboratively w/...

**Claudia Cohn MD** @cohn_md

4 days ago

@alialiali198851 Are you referring to the collection method? In the United States we are collecting convalescent plasma by plasma apheresis. #AABBPEpTalk

**angelica patiño pedr** @angie_m_pati

4 days ago

RT @AABB: Q1: Excited to have many #teamblood representatives joining us today. Here's the first question. What steps is your facility taki...

**AABB** @AABB

4 days ago

Let's talk training! Q2: What strategies is your facility implementing in terms of staff training on CCP collection SOPs, donor eligibility, product segregation, etc. Don't forget to include A2 and #AABBPEptalk in your answer. <https://t.co/GbWyurqCvl>

**Beth Shaz** @BethShaz

4 days ago

A2: Our donor center has had to put policies in place to accept CCP donors. Now, we're switching to the new ISBT labels. The AABB protocol (<https://t.co/KbK73KDC5g>) has been a great resource in this effort! #AABBPEptalk

**mariaroussakis950@gmail.com** @medlabmaria

4 days ago

@cohn_md @ASHmooklerMD @AABB What is the expanded access protocol exactly? #AABBPEptalk

**Lauren A. Crowder** @SteelCrowder

4 days ago

@AABB A1: We are asking anyone interested in donating convalescent plasma to sign up on our website: <https://t.co/UVUeQDus9g> #AABBPEptalk #RedCrossScience

**AABB** @AABB

4 days ago

RT @BethShaz: A2: Our donor center has had to put policies in place to accept CCP donors. Now, we're switching to the new ISBT labels. The...

**Kerri Wachter** @knwachter

4 days ago

Great question! #AABBPEptalk

**Kerri Wachter** @knwachter

4 days ago

RT @BethShaz: A2: Our donor center has had to put policies in place to accept CCP donors. Now, we're switching to the new ISBT labels. The...

**AABB** @AABB

4 days ago

@esalinas1966 You may find this link useful! <https://t.co/63BK5tuSJZ> #AABBPEPtalk

**Sue T Johnson** @SueTJohnson

4 days ago

@AABB A.1 In Wisconsin, the first donor was collected this week. #AABBPEPtalk

**KimDrd** @batchuy

4 days ago

RT @BethShaz: A2: Our donor center has had to put policies in place to accept CCP donors. Now, we're switching to the new ISBT labels. The...

**KimDrd** @batchuy

4 days ago

RT @AABB: Let's talk training! Q2: What strategies is your facility implementing in terms of staff training on CCP collection SOPs, donor e...

**AABB** @AABB

4 days ago

RT @medlabmaria: @cohn_md @AShmooklerMD @AABB What is the expanded access protocol exactly? #AABBPEPtalk

**MKSubik** @MkSubik

4 days ago

@AABB A1. We are also doing mayo protocol at Albany Medical Center. #AABBPEPtalk

**Kerri Wachter** @knwachter

4 days ago

RT @SueTJohnson: @AABB A.1 In Wisconsin, the first donor was collected this week. #AABBPEPtalk

**Kerri Wachter** @knwachter

4 days ago

RT @MkSubik: @AABB A1. We are also doing mayo protocol at Albany Medical Center. #AABBPEPtalk

**Alma de Soa** @SoaSylvi

4 days ago

@AABB A1: Hi, we want to start the collection of convalescent plasma, but we have so many questions about antibodies titration, how are you doing it over there? Chile, #AABBPEPtalk

**Kerri Wachter** @knwachter

4 days ago

RT @AABB: @esalinas1966 You may find this link useful! <https://t.co/63BK5tuSJZ> #AABBPEPtalk

**Sue T Johnson** @SueTJohnson

4 days ago

RT @BethShaz: A2: Our donor center has had to put policies in place to accept CCP donors. Now, we're switching to the new ISBT labels. The...

**Kerri Wachter** @knwachter

4 days ago

RT @SoaSylvi: @AABB A1: Hi, we want to start the collection of convalescent plasma, but we have so many questions about antibodies titrati...

**Joyeeh de Castro** @joyeeh_decastro

4 days ago

#AABBPEPtalk How many weeks do you recommend that the donor be asymptomatic to be qualified - as early as 2 weeks will do or to be very sure 4 weeks? And when we say transfuse the collected CP immediately, what is the 'maximum' time allowable? 🤔

**Claudia Cohn MD** @cohn_md

4 days ago

@AABB A2: (1/2) We're getting ready to receive CCP by adding appropriate codes into our LIS and adding convalescent plasma to the menu of blood components available for MDs to order. We are also getting the word out that CCP will soon be available to treat patients. #AABBPEPtalk

**Kerri Wachter** @knwachter

4 days ago

RT @cohn_md: @AABB A2: (1/2) We're getting ready to receive CCP by adding appropriate codes into our LIS and adding convalescent plasma to...

**Justin Kreuter, MD** @KreuterMD

4 days ago

RT @ThatLabChick: @AABB @BethShaz @cohn_md Greetings! Asst Professor in the CLS department @KUMedCenter w/ a love 4 #blooducation ❤️ I am t...

**Claudia Cohn MD** @cohn_md

4 days ago

@AABB A2: (2/2) I have also contacted the MDs who will consent the COVID+ patients; made sure the central Mayo IRB is okay with my IRB; and developed a workflow. Things are moving fast! #AABBPEPtalk

**Kerri Wachter** @knwachter

4 days ago

RT @cohn_md: @AABB A2: (2/2) I have also contacted the MDs who will consent the COVID+ patients; made sure the central Mayo IRB is okay wit...

**Yulia Lin** @dryulialin

4 days ago

RT @cohn_md: @AABB A2: (1/2) We're getting ready to receive CCP by adding appropriate codes into our LIS and adding convalescent plasma to...

**Yulia Lin** @dryulialin

4 days ago

RT @SueTJohnson: @AABB A.1 In Wisconsin, the first donor was collected this week. #AABBPEPtalk

**Claudia Cohn MD** @cohn_md

4 days ago

@medlabmaria @AShmooklerMD @AABB This is a pathway FDA is using to allow as many hospitals as possible to gain access to CCP. This is needed because it is still considered an investigational drug. #AABBPEpTalk

**AABB @AABB**

4 days ago

RT @SueTJohnson: @AABB A.1 In Wisconsin, the first donor was collected this week.
#AABBPEPTalk

**Kerri Wachter @knwachter**

4 days ago

RT @cohn_md: @medlabmaria @AShmooklerMD @AABB This is a pathway FDA is using to allow as many hospitals as possible to gain access to CCP....

**Blood Bank Jamaica @1bloodbankja**

4 days ago

Join the conversation! #COVID19 #ConvalescentPlasma #AABBPepTalk

**Justin Kreuter, MD @KreuterMD**

4 days ago

RT @knwachter: What are some of the challenges that you've encountered in recruiting and screening/confirming eligibility of #Covid19 CCP d...

**#HarveysGang 1169181 Founder. @Laird_Admiral**

4 days ago

RT @medlabmaria: @AABB In Canada, blood collection is done by @CanadasLifeline (or @HemaQuebec). They are currently in the process of begin...

**AABB @AABB**

4 days ago

RT @SoaSylvi: @AABB A1: Hi, we want to start the collection of convalescent plasma, but we have so many questions about antibodies titrati...

**Claudia Cohn MD @cohn_md**

4 days ago

@medlabmaria @AABB Additional information is available at <https://t.co/O92cAWjpWC>. #AABBPepTalk

**Yulia Lin @dryulialin**

4 days ago

RT @medlabmaria: @AABB In Canada, blood collection is done by @CanadasLifeline (or @HemaQuebec). They are currently in the process of begin...

**AABB @AABB**

4 days ago

RT @cohn_md: @AABB A2: (1/2) We're getting ready to receive CCP by adding appropriate codes into our LIS and adding convalescent plasma to...

**mariaroussakis950@gmail.com @medlabmaria**

4 days ago

@AABB A2. Although I am not sure about the training strategies, the eligibility is outlined on @CanadasLifeline website is that the donors must be: male, <67 yrs, prev. confirmed #COVID19 by lab test, fully recovered from virus & symptom free for 28 days.
#AABBPEPTalk

**AABB @AABB**

4 days ago

RT @cohn_md: @medlabmaria @AABB Additional information is available at <https://t.co/O92cAWjpWC>. #AABBPepTalk

**Sue T Johnson** @SueTJohnson

4 days ago

A.2 So important to include building LIS codes and education of the MDs who will order CCP 👍 #AABBPEptalk

**Kerri Wachter** @knwachter

4 days ago

RT @cohn_md: @medlabmaria @AABB Additional information is available at <https://t.co/O92cAWjpWC>. #AABBPEpTalk

**AABB** @AABB

4 days ago

@angie_m_pati @AShmooklerMD Here you go! <https://t.co/WKILDrF2Y3>. #AABBPEpTalk

**Kerri Wachter** @knwachter

4 days ago

RT @medlabmaria: @AABB A2. Although I am not sure about the training strategies, the eligibility is outlined on @CanadasLifeline website is...

**mariaroussakis950@gmail.com** @medlabmaria

4 days ago

@cohn_md @AABB Thank you for the clarification! As a Canadian, I am not knowledgeable about the processes that the US is taking. #AABBPEptalk

**KimDrd** @batchuy

4 days ago

RT @SoaSylvi: @AABB A1: Hi, we want to start the collection of convalescent plasma, but we have so many questions about antibodies titrati...

**swati ratkal** @RatkaISwati

4 days ago

RT @cohn_md: @AABB A2: (1/2) We're getting ready to receive CCP by adding appropriate codes into our LIS and adding convalescent plasma to...

**Sue T Johnson** @SueTJohnson

4 days ago

RT @cohn_md: @medlabmaria @AABB Additional information is available at <https://t.co/O92cAWjpWC>. #AABBPEpTalk

**Justin Kreuter, MD** @KreuterMD

4 days ago

RT @AABB: Let's talk training! Q2: What strategies is your facility implementing in terms of staff training on CCP collection SOPs, donor e...

**Small G** @DaxtonMr

4 days ago

RT @medlabmaria: @AABB A2. Although I am not sure about the training strategies, the eligibility is outlined on @CanadasLifeline website is...

**Small G** @DaxtonMr

4 days ago

RT @AABB: Let's talk training! Q2: What strategies is your facility implementing in terms of staff training on CCP collection SOPs, donor e...

**AABB** @AABB

4 days ago

RT @SueTJohnson: A.2 So important to include building LIS codes and education of the MDs who will order CCP 📄 #AABBPEptalk <https://t.co/aG...>

**Justin Kreuter, MD** @KreuterMD

4 days ago

RT @BethShaz: A2: Our donor center has had to put policies in place to accept CCP donors. Now, we're switching to the new ISBT labels. The...

**Beth Shaz** @BethShaz

4 days ago

Many companies are working on this. Currently, organizations have developed in-house ELIZAs. For example, Univ of Minn is using Mt Sinai's protocol. #AABBPEptalk

**Cristine Moratelli Wink** @CristineWink

4 days ago

#AABBPEptalk

**Justin Kreuter, MD** @KreuterMD

4 days ago

RT @cohn_md: @medlabmaria @AABB Additional information is available at <https://t.co/O92cAWjpWC>. #AABBPEpTalk

**AABB** @AABB

4 days ago

RT @BethShaz: Many companies are working on this. Currently, organizations have developed in-house ELIZAs. For example, Univ of Minn is usi...

**Kerri Wachter** @knwachter

4 days ago

@medlabmaria @AABB @CanadasLifeline So no neg lab test for #Covid19 requirement, you're using 28 symptom-free period for safety? #AABBPEptalk

**Small G** @DaxtonMr

4 days ago

RT @AABB: Q1: Excited to have many #teamblood representatives joining us today. Here's the first question. What steps is your facility taki...

**Kerri Wachter** @knwachter

4 days ago

RT @medlabmaria: @cohn_md @AABB Thank you for the clarification! As a Canadian, I am not knowledgeable about the processes that the US is t...

**Claudia Cohn MD** @cohn_md

4 days ago

@MaracajaDLV @AABB Yes, yes and yes! As patients recover, we give them a flyer with information for how to donate. We are also working with local media to get the word out. #AABBPEpTalk

**Kerri Wachter** @knwachter

4 days ago

RT @BethShaz: Many companies are working on this. Currently, organizations have developed in-house ELIZAs. For example, Univ of Minn is usi...

**Erika Reese** @ErikaReese19

4 days ago

@AABB A2: For the Transfusion Service, we had to build the new E codes in our BBIS, create an SOP for approval process and highlight differences from the routine Thawed Plasma SOPs. #aabbpeptalk

**Kerri Wachter** @knwachter

4 days ago

RT @cohn_md: @MaracajaDLV @AABB Yes, yes and yes! As patients recover, we give them a flyer with information for how to donate. We are also...

**AABB** @AABB

4 days ago

Focusing on donor recruitment efforts Q3: How is your facility recruiting donors who have recovered from COVID-19? How challenging has it been? If you use A3 and the #AABBPEPTalk hashtag, everyone will be able to see your answer!
<https://t.co/9dSvIGVzyK>

**Kerri Wachter** @knwachter

4 days ago

RT @ErikaReese19: @AABB A2: For the Transfusion Service, we had to build the new E codes in our BBIS, create an SOP for approval process an...

**Ellie Hamilton** @EllieHamMTSBB

4 days ago

@cohn_md @AABB A1. We are also getting codes in our LIS system so hopefully can start receiving some next week.#AABBPEPTalk

**BeforeSurgery.com** @PRPandstemcells

4 days ago

RT @AABB: 🙌 Hello everyone! Thanks for joining today's #AABBPEPTalk with special guests @BethShaz and @Cohn_MD to discuss #COVID19 convales...

**Nour AlMozain** @NourAlmozain

4 days ago

RT @BethShaz: Many companies are working on this. Currently, organizations have developed in-house ELIZAs. For example, Univ of Minn is usi...

**Kerri Wachter** @knwachter

4 days ago

RT @AABB: Focusing on donor recruitment efforts Q3: How is your facility recruiting donors who have recovered from COVID-19? How challengin...

**KimDrd** @batchuy

4 days ago

Concurrently we can only collect plasma thru WB donations and platelet/plasma apheresis protocol what are your thoughts on this - hkdrd Philippines @AABB #AABBPEPTalk

**AABB** @AABB

4 days ago

RT @cohn_md: @MaracajaDLV @AABB Yes, yes and yes! As patients recover, we give them a flyer with information for how to donate. We are also...



mariaroussakis950@gmail.com @medlabmaria

4 days ago

@knwachter @AABB @CanadasLifeline This 28 day window is based on FDA guidelines that states that those who are symptom-free for 28 days do not need virus testing before donating. Also, other international research states that donors had better quality antibodies after 28 days. #AABBPEtalk



Kerri Wachter @knwachter

4 days ago

RT @medlabmaria: @knwachter @AABB @CanadasLifeline This 28 day window is based on FDA guidelines that states that those who are symptom-free...



KimDrd @batchuy

4 days ago

RT @medlabmaria: @knwachter @AABB @CanadasLifeline This 28 day window is based on FDA guidelines that states that those who are symptom-free...



Kerri Wachter @knwachter

4 days ago

RT @batchuy: Concurrently we can only collect plasma thru WB donations and platelet/plasma apheresis protocol what are your thoughts on thi...



OneBlood @my1blood

4 days ago

A2 Joining in on the @AABB #AABBPEtalk. We are collecting #convalescentplasma throughout our service areas and have specialized CCP teams. Our first CCP donor was @MiamiMayor Francis Suarez.



Beth Shaz @BethShaz

4 days ago

A3: (1/2) NYBC now has a website to recruit CCP donors: <https://t.co/q869ajjATT>. AABB has also recently launched <https://t.co/C5GI91S3Vj>, which enables potential COVID-19 convalescent plasma donors to find the center closest to them. #AABBPEtalk



Beth Shaz @BethShaz

4 days ago

A3: The biggest challenge is that the donors need to be at least 28-days symptom-free or have a negative PCR. #AABBPEtalk



Kerri Wachter @knwachter

4 days ago

RT @my1blood: A2 Joining in on the @AABB #AABBPEtalk. We are collecting #convalescentplasma throughout our service areas and have special...



Dan Smith @Dan1763

4 days ago

RT @AABB: Let's talk training! Q2: What strategies is your facility implementing in terms of staff training on CCP collection SOPs, donor e...



AABB @AABB

4 days ago

RT @my1blood: A2 Joining in on the @AABB #AABBPEtalk. We are collecting #convalescentplasma throughout our service areas and have special...

**Kerri Wachter** @knwachter

4 days ago

RT @BethShaz: A3: (1/2) NYBC now has a website to recruit CCP donors: <https://t.co/q869ajjATT>. AABB has also recently launched <https://t.co/...>

**KimDrd** @batchuy

4 days ago

RT @BethShaz: A3: The biggest challenge is that the donors need to be at least 28-days symptom-free or have a negative PCR. #AABBPEptalk

**Kerri Wachter** @knwachter

4 days ago

RT @BethShaz: A3: The biggest challenge is that the donors need to be at least 28-days symptom-free or have a negative PCR. #AABBPEptalk

**Claudia Cohn MD** @cohn_md

4 days ago

@BethShaz There is also the challenge of patients needing they were COVID-positive or a note from a doctor attesting to that. #AABBPEptalk

**angelica patino pedr** @angie_m_pati

4 days ago

@AABB A3. #AABBPEptalk . lo mas importante seria todos los donantes que estan recuperandose en su casa, qyue hayan sido vistos en la clinica y /o hospital y los que salen Hx; a todos estos antes de salir se les debe dar un brochure con la explicación del procedimiento, porque es util

**mariaroussakis950@gmail.com** @medlabmaria

4 days ago

@AABB A3. @CanadasLifeline has an online registry for #convalescentplasma donors. You can register to be a donor here (provided you meet the criteria): <https://t.co/4qOqmgJhz> (The form is towards the bottom of the site) #AABBPEptalk

**Kerri Wachter** @knwachter

4 days ago

@BethShaz Have recovered patients been having trouble getting a PCR test to confirm negative status? Especially given limited #Covid19 testing in US? #AABBPEptalk

**Kerri Wachter** @knwachter

4 days ago

RT @cohn_md: @BethShaz There is also the challenge of patients needing they were COVID-positive or a note from a doctor attesting to that...

**Ali** @alialiali198851

4 days ago

#AABBPEptalk How many times is plasma taken from a donor who has been cured of the virus and how much percentage of antibody remains in the body

**jayanna slayten** @JSlayten

4 days ago

RT @BethShaz: A3: The biggest challenge is that the donors need to be at least 28-days symptom-free or have a negative PCR. #AABBPEptalk

**AABB** @AABB

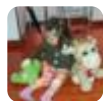
4 days ago

RT @medlabmaria: @AABB A3. @CanadasLifeline has an online registry for #convalescentplasma donors. You can register to be a donor here (pro...

**BeforeSurgery.com** @PRPandstemcells

4 days ago

RT @AABB: Focusing on donor recruitment efforts Q3: How is your facility recruiting donors who have recovered from COVID-19? How challengin...

**angelica patino pedr** @angie_m_pati

4 days ago

@AABB A3. #AABBPEPtalk , y concientizarlos de su ayuda

**Kerri Wachter** @knwachter

4 days ago

RT @alialiali198851: #AABBPEPtalk How many times is plasma taken from a donor who has been cured of the virus and how much percentage of an...

**mariaroussakis950@gmail.com** @medlabmaria

4 days ago

@MLSCIENTISTStt @AABB @CanadasLifeline These are the requirements as posted on @CanadasLifeline's website: <https://t.co/TGuxrcKkzZ> #AABBPEPtalk**Dana Bostic** 🐾❤️ @ThatLabChick

4 days ago

RT @KreuterMD: @AABB @BethShaz @cohn_md Hi #AABBPEPtalk, I'm Justin, joining/multitasking from Minnesota! <https://t.co/FMBIYCVQI2>**Nour AlMozain** @NourAlmozain

4 days ago

@AABB A.3 , recruitment through many Channels , MDs, social media and <https://t.co/Rt6vi1IYMr> #AABBPEPtalk**AABB** @AABB

4 days ago

RT @BethShaz: A3: (1/2) NYBC now has a website to recruit CCP donors: <https://t.co/q869ajjATT>. AABB has also recently launched <https://t.co...>**AABB** @AABB

4 days ago

RT @BethShaz: A3: The biggest challenge is that the donors need to be at least 28-days symptom-free or have a negative PCR. #AABBPEPtalk

**Dana Bostic** 🐾❤️ @ThatLabChick

4 days ago

RT @AABB: Focusing on donor recruitment efforts Q3: How is your facility recruiting donors who have recovered from COVID-19? How challengin...

**Kerri Wachter** @knwachter

4 days ago

RT @medlabmaria: @MLSCIENTISTStt @AABB @CanadasLifeline These are the requirements as posted on @CanadasLifeline's website: <https://t.co/T...>**Kerri Wachter** @knwachter

4 days ago

RT @NourAlmozain: @AABB A.3 , recruitment through many Channels , MDs, social media and <https://t.co/Rt6vi1IYMr> #AABBPEPtalk

**AABB @AABB**

4 days ago

RT @cohn_md: @BethShaz There is also the challenge of patients needing they were COVID-positive or a note from a doctor attesting to that....

**Claudia Cohn MD @cohn_md**

4 days ago

@AABB A3: (1/2) We are notifying staff and patients who have recovered from COVID19 that there is a pathway to donate. We are also encouraging patients who have recovered to make an appointment with their local blood center for one month from the day of their discharge. #AABBPEPtalk

**Danielle Maracaja, MD, MHS @MaracajaDLV**

4 days ago

@cohn_md @BethShaz The restriction of the blood tests for several reasons (test availability, test supplies,...) are jeopardizing the collection of healthy donors who were asymptomatic. These would be probably a great portion of the population for donation. #AABBPEPtalk

**AABB @AABB**

4 days ago

RT @angie_m_pati: @AABB A3. #AABBPEPtalk . lo mas importante seria todos los donantes que estan recuperandose en su casa, qyue hayan sido v...

**Dana Bostic 🐘❤ @ThatLabChick**

4 days ago

RT @AABB: Let's talk training! Q2: What strategies is your facility implementing in terms of staff training on CCP collection SOPs, donor e...

**Beth Shaz @BethShaz**

4 days ago

Collect and manufacture it as you would plasma. It's a typical frozen plasma product. #AABBPEPtalk

**Claudia Cohn MD @cohn_md**

4 days ago

@AABB A3: (2/2) We are also instructing recovered patients to return to the hospital to have their antibody titer test drawn. #AABBPEPtalk

**KimDrd @batchuy**

4 days ago

RT @BethShaz: Collect and manufacture it as you would plasma. It's a typical frozen plasma product. #AABBPEPtalk

**Kerri Wachter @knwachter**

4 days ago

RT @MaracajaDLV: @cohn_md @BethShaz The restriction of the blood tests for several reasons (test availability, test supplies,...) are jeopa...

**Kerri Wachter @knwachter**

4 days ago

RT @cohn_md: @AABB A3: (1/2) We are notifying staff and patients who have recovered from COVID19 that there is a pathway to donate. We are...

**Kerri Wachter** @knwachter

4 days ago

RT @BethShaz: Collect and manufacture it as you would plasma. It's a typical frozen plasma product. #AABBPEptalk <https://t.co/D7wluuVK0C>

**Kerri Wachter** @knwachter

4 days ago

RT @cohn_md: @AABB A3: (2/2) We are also instructing recovered patients to return to the hospital to have their antibody titer test drawn....

**AABB** @AABB

4 days ago

RT @cohn_md: @AABB A3: (2/2) We are also instructing recovered patients to return to the hospital to have their antibody titer test drawn....

**AABB** @AABB

4 days ago

RT @MaracajaDLV: @cohn_md @BethShaz The restriction of the blood tests for several reasons (test availability, test supplies,...) are jeopa...

**AABB** @AABB

4 days ago

RT @BethShaz: Collect and manufacture it as you would plasma. It's a typical frozen plasma product. #AABBPEptalk <https://t.co/D7wluuVK0C>

**OneBlood** @my1blood

4 days ago

A3 #AABBPEptalk @AABB OneBlood is working closely with the Florida Department of Health to identify people who have recovered from COVID-19 to be potential donors. And we are reaching out through our social and digital marketing channels.

**Claudia Cohn MD** @cohn_md

4 days ago

@BethShaz *Needing a lab test proving that they were COVID-positive #AABBPEptalk

**AABB** @AABB

4 days ago

RT @my1blood: A3 #AABBPEptalk @AABB OneBlood is working closely with the Florida Department of Health to identify people who have recovered...

**KimDrd** @batchuy

4 days ago

RT @my1blood: A3 #AABBPEptalk @AABB OneBlood is working closely with the Florida Department of Health to identify people who have recovered...

**Kerri Wachter** @knwachter

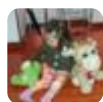
4 days ago

RT @cohn_md: @BethShaz *Needing a lab test proving that they were COVID-positive #AABBPEptalk

**Ali** @alialiali198851

4 days ago

#AABBPEptalk Does the amount of antibody differ on the severity of the infection?

**angelica patino pedr** @angie_m_pati

4 days ago

@cohn_md @AABB #AABBPEPTalk que se espera con este examen de anticuepor, que le estan haciendo y que pacientes erian aptos para relziar la donacion de plasma

**Aaron D. Shmookler** @AShmooklerMD

4 days ago

Duty calls, @AABB #AABBPEPTalk Would it be possible for someone to summarize some key points (if there are any) from this AWESOME talk? Will follow up on the hashtag later for more conversation. Thanks for putting this together...stay healthy and safe -- and happy holidays.

**Danielle Maracaja, MD, MHS** @MaracajaDLV

4 days ago

@BethShaz Dr. Shaz, so is this product frozen or fresh? What is the recommendation for administration, including dose for transfusion? #AABBPEPTalk

**Dana Bostic** 🐾❤️ @ThatLabChick

4 days ago

I am loving the fact that we are having a diverse chat in #AABBPEPTalk and this is so worthy of highlighting 🙌 #DiversityIsOurStrength #Blooducation #ConvalescentPlasma

**AABB** @AABB

4 days ago

RT @cohn_md: @AABB A3: (1/2) We are notifying staff and patients who have recovered from COVID19 that there is a pathway to donate. We are...

**Alma de Soa** @SoaSylvi

4 days ago

RT @alialiali198851: #AABBPEPTalk Does the amount of antibody differ on the severity of the infection?

**Kerri Wachter** @knwachter

4 days ago

RT @alialiali198851: #AABBPEPTalk Does the amount of antibody differ on the severity of the infection?

**KimDrd** @batchuy

4 days ago

RT @alialiali198851: #AABBPEPTalk Does the amount of antibody differ on the severity of the infection?

**Kerri Wachter** @knwachter

4 days ago

RT @ThatLabChick: I am loving the fact that we are having a diverse chat in #AABBPEPTalk and this is so worthy of highlighting 🙌 #Diversity!

**KimDrd** @batchuy

4 days ago

RT @MaracajaDLV: @BethShaz Dr. Shaz, so is this product frozen or fresh? What is the recommendation for administration, including dose for...

**maxberro** @maxberro1

4 days ago

@AABB A3: We will start soon to contact other COVID-19 treatment centers and collect data about recovered patients #AABBPEPTalk

**Omar Sabry** @drosabry

4 days ago

#AABBPEPTalk #COVID19 #convalescentplasma #CoronaPandemic

**Kerri Wachter** @knwachter

4 days ago

RT @maxberro1: @AABB A3: We will start soon to contact other COVID-19 treatment centers and collect data about recovered patients #AABBPEPt...

**KimDrd** @batchuy

4 days ago

@AABB #AABBPEPTalk Is there an option or substitute for antibody titer testing if the technology is not easily available?

**Joyeeh de Castro** @joyeeh_decastro

4 days ago

#AABBPEPTalk In a resource-constraint setting, do we really need to be strict regarding the IgG levels or IgG-positive will be acceptable?

**Kerri Wachter** @knwachter

4 days ago

RT @batchuy: @AABB #AABBPEPTalk Is there an option or substitute for antibody titer testing if the technology is not easily available?

**Claudia Cohn MD** @cohn_md

4 days ago

@dskrausemdphd @AABB @MaracajaDLV This is a complicated answer. We're not specifically tracking patient plasma and the unit that they produce, but we are hoping to launch a study looking at neutralizing antibody levels of each CCP unit we transfuse. #AABBPEpTalk

**Kerri Wachter** @knwachter

4 days ago

RT @cohn_md: @dskrausemdphd @AABB @MaracajaDLV This is a complicated answer. We're not specifically tracking patient plasma and the unit th...

**AABB** @AABB

4 days ago

Q4: What challenges did your facility have to overcome in setting up a CCP collection program? #AABBPEPTalk <https://t.co/pCWmiiMK5e>**Ali** @alialiali198851

4 days ago

#AABBPEPTalk Are antibodies affected in freezing, or do they prefer to give them fresh plasma

**Alma de Soa** @SoaSylvi

4 days ago

@cohn_md @AABB which antibody titer do you consider significant for donor extraction? #AABBPEPTalk

**KimDrd** @batchuy

4 days ago

RT @alialiali198851: #AABBPEPTalk Are antibodies affected in freezing, or do they prefer to give them fresh plasma

**Kerri Wachter** @knwachter

4 days ago

RT @AABB: Q4: What challenges did your facility have to overcome in setting up a CCP collection program? #AABBPEPtalk <https://t.co/pCWmiiMK...>

**KimDrd** @batchuy

4 days ago

RT @SoaSylvi: @cohn_md @AABB which antibody titer do you consider significant for donor extraction? #AABBPEPtalk

**Kerri Wachter** @knwachter

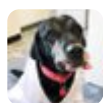
4 days ago

RT @alialiali198851: #AABBPEPtalk Are antibodies affected in freezing, or do they prefer to give them fresh plasma

**Claudia Cohn MD** @cohn_md

4 days ago

@AABB A4: To gain access to CCP we had to enroll in a protocol. This was initially very confusing as there were several protocols. The information was fragmented and often outdated within 24 hours. Luckily, AABB put everything on their website <https://t.co/a8eNBWW4y8> #AABBPEPtalk

**Kerri Wachter** @knwachter

4 days ago

RT @SoaSylvi: @cohn_md @AABB which antibody titer do you consider significant for donor extraction? #AABBPEPtalk

**Beth Shaz** @BethShaz

4 days ago

A4: What challenges have there not been! The main three, especially right in the beginning, were identifying donors, the lack of availability of testing, and neutralizing antibody testing. #AABBPEPtalk

**Enrique S** @esalinas1966

4 days ago

RT @SoaSylvi: @cohn_md @AABB which antibody titer do you consider significant for donor extraction? #AABBPEPtalk

**KimDrd** @batchuy

4 days ago

RT @BethShaz: A4: What challenges have there not been! The main three, especially right in the beginning, were identifying donors, the lack...

**AABB** @AABB

4 days ago

RT @BethShaz: A4: What challenges have there not been! The main three, especially right in the beginning, were identifying donors, the lack...

**AABB** @AABB

4 days ago

RT @cohn_md: @AABB A4: To gain access to CCP we had to enroll in a protocol. This was initially very confusing as there were several protoc...

**New York Blood Center Enterprises (NYBCe)** @BloodExperts

4 days ago

@BethShaz and @Cohn_MD discussing live now #COVID19 #convalescentplasma. Follow #AABBPEPtalk to join the conversation.



Danielle Maracaja, MD, MHS @MaracajaDLV

4 days ago

RT @BethShaz: A4: What challenges have there not been! The main three, especially right in the beginning, were identifying donors, the lack...



AABB @AABB

4 days ago

RT @ThatLabChick: I am loving the fact that we are having a diverse chat in #AABBPEPtalk and this is so worthy of highlighting 🤗 #Diversity!...



Sue T Johnson @SueTJohnson

4 days ago

RT @BethShaz: A4: What challenges have there not been! The main three, especially right in the beginning, were identifying donors, the lack...



Kerri Wachter @knwachter

4 days ago

RT @cohn_md: @AABB A4: To gain access to CCP we had to enroll in a protocol. This was initially very confusing as there were several protoc...



Claudia Cohn MD @cohn_md

4 days ago

@SoaSylvi @AABB The FDA initially chose a titer of 1:320, however, the agency has now reduced the titer to 1:80. #AABBPEpTalk



AABB @AABB

4 days ago

RT @cohn_md: @SoaSylvi @AABB The FDA initially chose a titer of 1:320, however, the agency has now reduced the titer to 1:80. #AABBPEpTalk



Kerri Wachter @knwachter

4 days ago

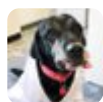
RT @BethShaz: A4: What challenges have there not been! The main three, especially right in the beginning, were identifying donors, the lack...



Dr Sylvia Benjamin @Gogmum

4 days ago

RT @BethShaz: A4: What challenges have there not been! The main three, especially right in the beginning, were identifying donors, the lack...



Kerri Wachter @knwachter

4 days ago

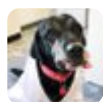
RT @BloodExperts: @BethShaz and @Cohn_MD discussing live now #COVID19 #convalescentplasma. Follow #AABBPEPtalk to join the conversation. ht...



AABB @AABB

4 days ago

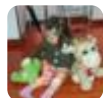
RT @BloodExperts: @BethShaz and @Cohn_MD discussing live now #COVID19 #convalescentplasma. Follow #AABBPEPtalk to join the conversation. ht...



Kerri Wachter @knwachter

4 days ago

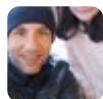
RT @cohn_md: @SoaSylvi @AABB The FDA initially chose a titer of 1:320, however, the agency has now reduced the titer to 1:80. #AABBPEpTalk



angelica patino pedr @angie_m_pati

4 days ago

@BethShaz #AABBPEptalk , pero si se recolecta sangre total (WB) que se hace con los globulos y las plaquetas, se podrian utilizar, o es mejor solo recolectar plasma de aferesis



Omar Sabry @drosabry

4 days ago

@MaracajaDLV @AABB @cohn_md @BethShaz asymptomatic donors would provide the best #convalescentplasma. Their immune response has overcome the virus unnoticed. I think their plasma contains other factors in addition to neutralizing Ab #AABBPEptalk



Kristin Sticco, DO MS @ksticcoMD

4 days ago

@cohn_md @SoaSylvi @AABB To assure more donors? or is there a principle behind the reduction? #AABBPEptalk



Dana Bostic 🐘❤️ @ThatLabChick

4 days ago

@AShmooklerMD @AABB Same here 🙌 #WorkingFromHome and my daughter is demanding her lunch. 😊 Great #AABBPEptalk thus far & I look forward to reading more of these posts later. Wonderful and timely topic for sure! Stay healthy everyone 🙌 Thank you @AABB and wishing all a safe holiday weekend! <https://t.co/DOcJBQPMbZ>



Nour AlMozaïn @NourAlmozaïn

4 days ago

RT @cohn_md: @SoaSylvi @AABB The FDA initially chose a titer of 1:320, however, the agency has now reduced the titer to 1:80. #AABBPEptalk



Kerri Wachter @knwachter

4 days ago

RT @drosabry: @MaracajaDLV @AABB @cohn_md @BethShaz asymptomatic donors would provide the best #convalescentplasma. Their immune response h...



KimDrd @batchuy

4 days ago

RT @angie_m_pati: @BethShaz #AABBPEptalk , pero si se recolecta sangre total (WB) que se hace con los globulos y las plaquetas, se podrian...



Comprehensive Cell Solutions @CCSNYBC @CcsNybc

4 days ago

@BethShaz and @Cohn_MD discussing live now #COVID19 #convalescentplasma. Follow #AABBPEptalk to join the conversation.



Kerri Wachter @knwachter

4 days ago

RT @ksticcoMD: @cohn_md @SoaSylvi @AABB To assure more donors? or is there a principle behind the reduction? #AABBPEptalk



Ellie Hamilton @EllieHamMTSBB

4 days ago

@AABB Q4. My financial folks have stopped the process from moving forward because they don't know what billing codes to use. #AABBPEptalk



Claudia Cohn MD @cohn_md

4 days ago

@alialiali198851 Antibodies have been shown to be stable through a freeze-thaw cycle. We are using frozen plasma. #AABBPEpTalk



Kerri Wachter @knwachter

4 days ago

RT @cohn_md: @alialiali198851 Antibodies have been shown to be stable through a freeze-thaw cycle. We are using frozen plasma. #AABBPEpTalk



KimDrd @batchuy

4 days ago

RT @cohn_md: @alialiali198851 Antibodies have been shown to be stable through a freeze-thaw cycle. We are using frozen plasma. #AABBPEpTalk



Kerri Wachter @knwachter

4 days ago

RT @EllieHamMTSBB: @AABB Q4. My financial folks have stopped the process from moving forward because they don't know what billing codes to...



Alma de Soa @SoaSylvi

4 days ago

RT @alialiali198851: #AABBPEptalk Are antibodies affected in freezing, or do they prefer to give them fresh plasma



Kristin Sticco, DO MS @ksticcoMD

4 days ago

@BloodExperts @BethShaz @cohn_md A3: The biggest challenge is getting tested and finding donors that have HAD a positive test and are now symptom free. #AABBPEptalk



Dr Sylvia Benjamin @Gogmum

4 days ago

RT @BethShaz: A1: New York Blood Center has been collecting and distributing CCP for a couple of weeks. We had to work with our partner hos...



Sue T Johnson @SueTJohnson

4 days ago

@cohn_md @AABB @SoaSylvi Good to hear, we all know that antibody titration is semi-quantitative at best! #AABBPEptalk



Omar Sabry @drosabry

4 days ago

@cohn_md @AABB @BethShaz Some reports claim that #Covid_19 could cause recurrent infection. #AABBPEptalk #convalescentplasma #COVID19



Kerri Wachter @knwachter

4 days ago

Any thoughts on how long until you can/will be able to screen for asymptomatic donors? #AABBPEptalk #COVID19



Dr Sylvia Benjamin @Gogmum

4 days ago

RT @AABB: Ten minutes to go! You will not want to miss today's #AABBPEptalk with @BethShaz and @Cohn_MD focusing on the leading role the bl...

**Kerri Wachter** @knwachter

4 days ago

RT @SueTJohnson: @cohn_md @AABB @SoaSylvi Good to hear, we all know that antibody titration is semi-quantitative at best! #AABBPEPtalk

**maxberro** @maxberro1

4 days ago

@AABB A4: we don't have yet covid-19 antibody tests, we are expecting to receive them in the coming days. #AABBPEPtalk

**mariaroussakis950@gmail.com** @medlabmaria

4 days ago

@AABB A4. One of the main challenges would be in verifying/validating serological testing for #SARSCoV2 antibodies and the availability of kits and reagents. #AABBPEPtalk

**Kerri Wachter** @knwachter

4 days ago

RT @drosabry: @cohn_md @AABB @BethShaz Some reports claim that #Covid_19 could cause recurrent infection. #AABBPEPtalk #convalescentplasma...

**John Sherbeck MD** @TeamCaptainJohn

4 days ago

@AABB A1. We are reaching out to + outpatients to inform them of the options of being a donor. We have opened up a EAP through the MAYO IRB, and we are working on building orders in the EMR so we can assure good transfusion safety while also linking to a research protocol #AABBPEPtalk

**Erika Reese** @ErikaReese19

4 days ago

@ksticcoMD @BloodExperts @BethShaz @cohn_md A3: Or donors who have a negative COVID test. Some of our potential donors still have detectable levels of virus. #aabbpeptalk

**Kerri Wachter** @knwachter

4 days ago

RT @medlabmaria: @AABB A4. One of the main challenges would be in verifying/validating serological testing for #SARSCoV2 antibodies and the...

**Kerri Wachter** @knwachter

4 days ago

RT @TeamCaptainJohn: @AABB A1. We are reaching out to + outpatients to inform them of the options of being a donor. We have opened up a EAP...

**mariaroussakis950@gmail.com** @medlabmaria

4 days ago

@underthe_scope @AABB @BethShaz @cohn_md @McMasterU Are there any clinical trials in place to look into this treatment for the UK? #AABBPEPtalk

**Kerri Wachter** @knwachter

4 days ago

RT @ErikaReese19: @ksticcoMD @BloodExperts @BethShaz @cohn_md A3: Or donors who have a negative COVID test. Some of our potential donors s...

**Kerri Wachter** @knwachter

4 days ago

RT @medlabmaria: @underthe_scope @AABB @BethShaz @cohn_md @McMasterU
Are there any clinical trials in place to look into this treatment for...

**AABB** @AABB

4 days ago

RT @cohn_md: @alialiali198851 Antibodies have been shown to be stable through a
freeze-thaw cycle. We are using frozen plasma. #AABBPepTalk

**AABB** @AABB

4 days ago

RT @ksticcoMD: @BloodExperts @BethShaz @cohn_md A3: The biggest challenge is
getting tested and finding donors that have HAD a positive tes...

**BeforeSurgery.com** @PRPandstemcells

4 days ago

RT @cohn_md: @SoaSylvi @AABB The FDA initially chose a titer of 1:320, however, the
agency has now reduced the titer to 1:80. #AABBPepTalk

**Tamar Azikuri, MD** @TamarAzikuri

4 days ago

@cohn_md @AABB @alialiali198851 When doin CCP, what is the clinical significance of
HLA antibody testing? #AABBPepTalk @AABB

**AABB** @AABB

4 days ago

RT @medlabmaria: @AABB A4. One of the main challenges would be in
verifying/validating serological testing for #SARSCoV2 antibodies and the...

**KimDrd** @batchuy

4 days ago

RT @TamarAzikuri: @cohn_md @AABB @alialiali198851 When doin CCP, what is the
clinical significance of HLA antibody testing? #AABBPepTalk @A...

**Kerri Wachter** @knwachter

4 days ago

RT @TamarAzikuri: @cohn_md @AABB @alialiali198851 When doin CCP, what is the
clinical significance of HLA antibody testing? #AABBPepTalk @A...

**Small G** @DaxtonMr

4 days ago

RT @cohn_md: @SoaSylvi @AABB The FDA initially chose a titer of 1:320, however, the
agency has now reduced the titer to 1:80. #AABBPepTalk

**Nour AlMozain** @NourAlmozain

4 days ago

RT @medlabmaria: @AABB A4. One of the main challenges would be in
verifying/validating serological testing for #SARSCoV2 antibodies and the...

**AABB** @AABB

4 days ago

Last question! Q5: What criteria do you follow to make the decision to administer CCP?
#AABBPEPTalk Please use A5 in your answer. <https://t.co/hf0J5QY7is>



Alliance for Community Transfusion Services (ACTS) @ACTSAlliance

4 days ago

Would you mind sharing your donation interval plan for CCP donors? I'm hearing a range of 4 days to 28 days. #AABBPEptalk



Alma de Soa @SoaSylvi

4 days ago

RT @angie_m_pati: @cohn_md @AABB #AABBPEptalk que se espera con este examen de anticuepor, que le estan haciendo y que pacientes erian apto...



KimDrd @batchuy

4 days ago

@AABB #AABBPEptalk what is the suggested dose of transfusion for CCP to critically ill COVID19 patients?



Kerri Wachter @knwachter

4 days ago

RT @AABB: Last question! Q5: What criteria do you follow to make the decision to administer CCP? #AABBPEptalk Please use A5 in your answe...



KimDrd @batchuy

4 days ago

RT @AABB: Last question! Q5: What criteria do you follow to make the decision to administer CCP? #AABBPEptalk Please use A5 in your answe...



Kerri Wachter @knwachter

4 days ago

RT @ACTSAlliance: Would you mind sharing your donation interval plan for CCP donors? I'm hearing a range of 4 days to 28 days. #AABBPEptalk



Kerri Wachter @knwachter

4 days ago

RT @batchuy: @AABB #AABBPEptalk what is the suggested dose of transfusion for CCP to critically ill COVID19 patients?



angelica patiño pedr @angie_m_pati

4 days ago

@medlabmaria @AABB #AABBPEptalk. que pruebas especificas de anticuerpos se les debe hacer a los donantes



Beth Shaz @BethShaz

4 days ago

A5: Mayo Clinic's eIND guidelines are probably the best place to start. Hopkins and Columbia are studying different patient populations, including prophylactic use of CCP. #AABBPEptalk



Kerri Wachter @knwachter

4 days ago

RT @BethShaz: A5: Mayo Clinic's eIND guidelines are probably the best place to start. Hopkins and Columbia are studying different patient p...



AABB @AABB

4 days ago

RT @BethShaz: A5: Mayo Clinic's eIND guidelines are probably the best place to start. Hopkins and Columbia are studying different patient p...



Y B R TRANSPORT CORP @BelkysYovani

4 days ago

RT @my1blood: A3 #AABBPEPTalk @AABB OneBlood is working closely with the Florida Department of Health to identify people who have recovered...



KimDrd @batchuy

4 days ago

RT @BethShaz: A5: Mayo Clinic's eIND guidelines are probably the best place to start. Hopkins and Columbia are studying different patient p...



Claudia Cohn MD @cohn_md

4 days ago

@batchuy @alialiali198851 I don't have advice for fresh vs. frozen. We are using frozen plasma because that is what my blood center provides. #AABBPEPTalk



KimDrd @batchuy

4 days ago

RT @ACTSAlliance: Would you mind sharing your donation interval plan for CCP donors? I'm hearing a range of 4 days to 28 days. #AABBPEPTalk



Nour AlMozain @NourAlmozain

4 days ago

@AABB A4: 18+ with moderate to severe symptoms #AABBPEPTalk



Kerri Wachter @knwachter

4 days ago

RT @cohn_md: @batchuy @alialiali198851 I don't have advice for fresh vs. frozen. We are using frozen plasma because that is what my blood c...



Marie Jules @AngelaGen2

4 days ago

RT @AABB: Q1: Excited to have many #teamblood representatives joining us today. Here's the first question. What steps is your facility taki...



KimDrd @batchuy

4 days ago

RT @cohn_md: @batchuy @alialiali198851 I don't have advice for fresh vs. frozen. We are using frozen plasma because that is what my blood c...



Valerie Magutu @ValerieMagutu

4 days ago

RT @cohn_md: @SoaSylvi @AABB The FDA initially chose a titer of 1:320, however, the agency has now reduced the titer to 1:80. #AABBPEPTalk



Kerri Wachter @knwachter

4 days ago

RT @NourAlmozain: @AABB A4: 18+ with moderate to severe symptoms #AABBPEPTalk



Claudia Cohn MD @cohn_md

4 days ago

@AABB A5: (1/2) We follow the guidelines on the Mayo protocol for expanded access to CCP. Basically, donors must be adults with proven COVID-19 diagnosis and symptoms severe enough to be hospitalized. #AABBPEPTalk

**Kerri Wachter** @knwachter

4 days ago

RT @cohn_md: @AABB A5: (1/2) We follow the guidelines on the Mayo protocol for expanded access to CCP. Basically, donors must be adults wit...

**KimDrd** @batchuy

4 days ago

RT @cohn_md: @AABB A5: (1/2) We follow the guidelines on the Mayo protocol for expanded access to CCP. Basically, donors must be adults wit...

**Claudia Cohn MD** @cohn_md

4 days ago

@AABB A5: (2/2) If there is limited CCP we may consider giving it primarily to patients who show signs of needing the ICU but haven't been admitted yet. There is a useful list in the Mayo expanded access webpage -- <https://t.co/sXXqnMKJIR> -- with specific requirements. #AABBPEptalk

**Erika Reese** @ErikaReese19

4 days ago

@ACTSAlliance Good question! I'm guessing the standards for a frequent plasmapheresis program would apply to #CCP donors. @aabb #aabbpeptalk

**Kerri Wachter** @knwachter

4 days ago

RT @cohn_md: @AABB A5: (2/2) If there is limited CCP we may consider giving it primarily to patients who show signs of needing the ICU but...

**Kerri Wachter** @knwachter

4 days ago

RT @ErikaReese19: @ACTSAlliance Good question! I'm guessing the standards for a frequent plasmapheresis program would apply to #CCP donors...

**AABB** @AABB

4 days ago

RT @cohn_md: @batchuy @alialiali198851 I don't have advice for fresh vs. frozen. We are using frozen plasma because that is what my blood c...

**Omar Sabry** @drosabry

4 days ago

@AABB #AABBPEptalk #COVID19 # Is there any guidelines about dosage of #convalescentplasma duration of treatment needed for #COVID2019 patients

**AABB** @AABB

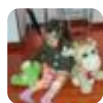
4 days ago

RT @cohn_md: @AABB A5: (1/2) We follow the guidelines on the Mayo protocol for expanded access to CCP. Basically, donors must be adults wit...

**AABB** @AABB

4 days ago

RT @cohn_md: @AABB A5: (2/2) If there is limited CCP we may consider giving it primarily to patients who show signs of needing the ICU but...

**angelica patino pedr** @angie_m_pati

4 days ago

@medlabmaria @AABB #AABBPEptalk perdon que pruebas especificas de anticuerpos se les debe hacer a los donantes?

**Alma de Soa** @SoaSylvi

4 days ago

RT @batchuy: @AABB #AABBPEPtalk what is the suggested dose of transfusion for CCP to critically ill COVID19 patients?

**Beth Shaz** @BethShaz

4 days ago

Per FDA, plasma donation interval is 28 days, but that can be adjusted with medical and FDA approval. #AABBPEPtalk

**KimDrd** @batchuy

4 days ago

RT @drosabry: @AABB #AABBPEPtalk #COVID19 # Is there any guidelines about dosage of #convalescentplasma duration of treatment needed for...

**Kerri Wachter** @knwachter

4 days ago

RT @drosabry: @AABB #AABBPEPtalk #COVID19 # Is there any guidelines about dosage of #convalescentplasma duration of treatment needed for...

**Kerri Wachter** @knwachter

4 days ago

RT @BethShaz: Per FDA, plasma donation interval is 28 days, but that can be adjusted with medical and FDA approval. #AABBPEPtalk <https://t...>

**BeforeSurgery.com** @PRPandstemcells

4 days ago

RT @BethShaz: A5: Mayo Clinic's eIND guidelines are probably the best place to start. Hopkins and Columbia are studying different patient p...

**BeforeSurgery.com** @PRPandstemcells

4 days ago

RT @AABB: Last question! Q5: What criteria do you follow to make the decision to administer CCP? #AABBPEPtalk Please use A5 in your answe...

**maxberro** @maxberro1

4 days ago

@AABB A5: initially severe cases of COVID-19. #AABBPEPtalk

**Erika Reese** @ErikaReese19

4 days ago

@AABB A5: I don't think our criteria is completely defined, but decisions will be made by a multi-disciplinary #CCP team created by our Medical Director. #aabbpeptalk

**Small G** @DaxtonMr

4 days ago

@AABB @BethShaz @cohn_md We still don't have a System here in Kenya for Convalescent plasma But maybe @KNBTSoOfficial Will embark on a framework to make this Possible @ISBTco #youngleaders #AABBPEPtalk #COVID19

**Tamar Azikuri, MD** @TamarAzikuri

4 days ago

When doing CCP, what is the clinical significance of HLA antibody testing?
#AABBPEPtalk @AABB @BethShaz @cohn_md

**Alma de Soa** @SoaSylvi

4 days ago

@batchuy @AABB And.... what condition must the patient have to be a candidate to receive this plasma? #AABBPEPTalk

**Héctor Guidos** @HectorGuidos

4 days ago

RT @cohn_md: @AABB A5: (2/2) If there is limited CCP we may consider giving it primarily to patients who show signs of needing the ICU but...

**Ellie Hamilton** @EllieHamMTSBB

4 days ago

@drosabry So when you thaw this would have a 24 hour expiration date? #AABBPEPTalk

**Claudia Cohn MD** @cohn_md

4 days ago

@TamarAzikuri @AABB @alialiali198851 We still need to follow all FDA guidelines on TRALI mitigation. #AABBPEPTalk

**KimDrd** @batchuy

4 days ago

RT @angie_m_pati: @medlabmaria @AABB #AABBPEPTalk perdon que pruebas especificas de anticuerpos se les debe hacer a los donantes?

**Kerri Wachter** @knwachter

4 days ago

RT @cohn_md: @TamarAzikuri @AABB @alialiali198851 We still need to follow all FDA guidelines on TRALI mitigation. #AABBPEPTalk

**KimDrd** @batchuy

4 days ago

RT @EllieHamMTSBB: @drosabry So when you thaw this would have a 24 hour expiration date? #AABBPEPTalk

**KimDrd** @batchuy

4 days ago

RT @SoaSylvi: @batchuy @AABB And.... what condition must the patient have to be a candidate to receive this plasma? #AABBPEPTalk

**Anas Nasir** @underthe_scope

4 days ago

@medlabmaria @AABB @BethShaz @cohn_md @McMasterU I think @NHSBT were looking into it and trials were being set up with @kingshealth, consisting of a few Trusts in London. My question to those currently using it, how do you ensure a sufficient titre of antibody that is therapeutically of use? #AABBPEPTalk

**KimDrd** @batchuy

4 days ago

RT @underthe_scope: @medlabmaria @AABB @BethShaz @cohn_md @McMasterU I think @NHSBT were looking into it and trials were being set up with...

**Beth Shaz** @BethShaz

4 days ago

RT @BethShaz: Per FDA, plasma donation interval is 28 days, but that can be adjusted with medical and FDA approval. #AABBPEPTalk <https://t...>



Karen Colocho @Kcolocho
@AABB @BethShaz @cohn_md #AABBPEPtalk

4 days ago



Omar Sabry @drosabry
@AABB Critically I'll patients #COVID19 on #ecmo or #Ventilator have also #DIC. Would the protocol of #MBT use only #convalescentplasma or would it be used as drug #AABBPEPtalk

4 days ago



Beth Shaz @BethShaz
Let me clarify: You can collect as frequently as your medical director approves. For example, NYBC is doing 4 times in 8 weeks. #AABBPEPtalk

4 days ago



AABB @AABB
That's all we have time for today! Thank you @BethShaz and @Cohn_MD for leading a very interesting discussion and THANK YOU all for participating in today's #AABBPEPtalk. We are SO proud of all of you for being in the front lines of the #COVID19 response! <https://t.co/1zzEm3oYLd>

4 days ago



Ali @alialiali198851
#AABBPEPtalk Is plasma given in the purifying period according to blood group

4 days ago



AABB @AABB
This #AABBPEPtalk was presented with the generous support of Cerus Corp. Thank you for your support!

4 days ago



KimDrd @batchuy
RT @AABB: This #AABBPEPtalk was presented with the generous support of Cerus Corp. Thank you for your support!

4 days ago



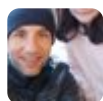
Danielle Maracaja, MD, MHS @MaracajaDLV
@AABB @BethShaz @cohn_md Thank you very much for the great #AABBPEPtalk in such relevant talk. It was amazing to see so many blood bankers all over the world!

4 days ago



BeforeSurgery.com @PRPandstemcells
RT @AABB: This #AABBPEPtalk was presented with the generous support of Cerus Corp. Thank you for your support!

4 days ago



Omar Sabry @drosabry
RT @AABB: That's all we have time for today! Thank you @BethShaz and @Cohn_MD for leading a very interesting discussion and THANK YOU all f...

4 days ago

**AABB** @AABB

4 days ago

AABB created a protocol (that is being regularly updated) to help facilities jumpstart the collection of #COVID19 convalescent plasma. Access it here <https://t.co/63BK5tuSJZ> #AABBPEPtalk

**AABB** @AABB

4 days ago

Additional resources will be posted on AABB's #COVID19 Convalescent Plasma Resources webpage <https://t.co/N765pNhwbg> #AABBPEPtalk

**Small G** @DaxtonMr

4 days ago

@AABB @BethShaz @cohn_md Daxton From Kenya Following Closely for Future practice on Convalescent plasma #AABBPEPtalk #COVID19

**Claudia Cohn MD** @cohn_md

4 days ago

Thank you all for joining us! I'll try to follow up on additional questions as I am able. Thank you all for the work you're doing during this crisis as well. #AABBPEPtalk

**AABB** @AABB

4 days ago

<https://t.co/yKIHD61iBU> is a new AABB website offering information and resources to the general public, blood collectors and clinicians about #COVID19 convalescent plasma. Help us get the word out! #AABBPEPtalk

**Erika Reese** @ErikaReese19

4 days ago

Lots of good convo about this hot topic! Now how do pickup that quarantini @aabb?! 😊 #ccp #convalescentplasma #COVID—19

**Tamar Azikuri, MD** @TamarAzikuri

4 days ago

RT @AABB: AABB created a protocol (that is being regularly updated) to help facilities jumpstart the collection of #COVID19 convalescent pl...

**Valerie Magutu** @ValerieMagutu

4 days ago

RT @AABB: <https://t.co/yKIHD61iBU> is a new AABB website offering information and resources to the general public, blood collectors and clin...

**Alma de Soa** @SoaSylvi

4 days ago

RT @underthe_scope: @medlabmaria @AABB @BethShaz @cohn_md @McMasterU I think @NHSBT were looking into it and trials were being set up with...

**AABB** @AABB

4 days ago

RT @cohn_md: Thank you all for joining us! I'll try to follow up on additional questions as I am able. Thank you all for the work you're do...

**maxberro** @maxberro1

4 days ago

@AABB Do you have an opinion about using whole blood from convalescent donors in treating covid-19 patients with bleeding? #AABBPEPtalk

**Héctor Guidos** @HectorGuidos

4 days ago

RT @AABB: AABB created a protocol (that is being regularly updated) to help facilities jumpstart the collection of #COVID19 convalescent pl...

**AABB** @AABB

4 days ago

RT @MaracajaDLV: @AABB @BethShaz @cohn_md Thank you very much for the great #AABBPEPtalk in such relevant talk. It was amazing to see so ma...

**AABB** @AABB

4 days ago

RT @BethShaz: Let me clarify: You can collect as frequently as your medical director approves. For example, NYBC is doing 4 times in 8 week...

**Beth Shaz** @BethShaz

4 days ago

Thanks to everyone for a great Twitter chat. #AABBPEPtalk

**Small G** @DaxtonMr

4 days ago

@MOH_Kenya @KNBTSOfficial We can borrow a leaf from @AABB and help our people on the Fight against #COVID19 @DrMercyKorir

**Tamar Azikuri, MD** @TamarAzikuri

4 days ago

Thank you very much for very informative discussion! #AABBPEPtalk @AABB @BethShaz @cohn_md Thanks a lot!

**KimDrd** @batchuy

4 days ago

We're hoping to have more of this!

**KimDrd** @batchuy

4 days ago

RT @cohn_md: Thank you all for joining us! I'll try to follow up on additional questions as I am able. Thank you all for the work you're do...

**AABB** @AABB

4 days ago

RT @BethShaz: Thanks to everyone for a great Twitter chat. #AABBPEPtalk

**AABB** @AABB

4 days ago

RT @underthe_scope: @medlabmaria @AABB @BethShaz @cohn_md @McMasterU I think @NHSBT were looking into it and trials were being set up with...

**Wan Nurul Husna** @jibutasii

4 days ago

RT @BethShaz: A3: The biggest challenge is that the donors need to be at least 28-days symptom-free or have a negative PCR. #AABBPEPtalk

**Wan Nurul Husna** @jibutasii

4 days ago

RT @cohn_md: @AABB A3: (2/2) We are also instructing recovered patients to return to the hospital to have their antibody titer test drawn....

**Wan Nurul Husna** @jibutasii

4 days ago

RT @BethShaz: Collect and manufacture it as you would plasma. It's a typical frozen plasma product. #AABBPEPtalk

**Wan Nurul Husna** @jibutasii

4 days ago

RT @cohn_md: @AABB A3: (1/2) We are notifying staff and patients who have recovered from COVID19 that there is a pathway to donate. We are...

**emfv** @emfv87

4 days ago

RT @AABB: <https://t.co/yKIHD61iBU> is a new AABB website offering information and resources to the general public, blood collectors and clin...

**Wan Nurul Husna** @jibutasii

4 days ago

RT @BethShaz: A4: What challenges have there not been! The main three, especially right in the beginning, were identifying donors, the lack...

**Wan Nurul Husna** @jibutasii

4 days ago

RT @cohn_md: @SoaSylvi @AABB The FDA initially chose a titer of 1:320, however, the agency has now reduced the titer to 1:80. #AABBPEpTalk

**Wan Nurul Husna** @jibutasii

4 days ago

RT @cohn_md: @alialiali198851 Antibodies have been shown to be stable through a freeze-thaw cycle. We are using frozen plasma. #AABBPEpTalk

**Wan Nurul Husna** @jibutasii

4 days ago

RT @medlabmaria: @AABB A4. One of the main challenges would be in verifying/validating serological testing for #SARSCoV2 antibodies and the...

**Wan Nurul Husna** @jibutasii

4 days ago

RT @BethShaz: A5: Mayo Clinic's eIND guidelines are probably the best place to start. Hopkins and Columbia are studying different patient p...

**Wan Nurul Husna** @jibutasii

4 days ago

RT @cohn_md: @batchuy @alialiali198851 I don't have advice for fresh vs. frozen. We are using frozen plasma because that is what my blood c...

**Wan Nurul Husna** @jibutasii

4 days ago

RT @cohn_md: @AABB A5: (2/2) If there is limited CCP we may consider giving it primarily to patients who show signs of needing the ICU but...

**Wan Nurul Husna** @jibutasii

4 days ago

RT @BethShaz: Per FDA, plasma donation interval is 28 days, but that can be adjusted with medical and FDA approval. #AABBPEPtalk

**Wan Nurul Husna** @jibutasii

4 days ago

RT @BethShaz: Let me clarify: You can collect as frequently as your medical director approves. For example, NYBC is doing 4 times in 8 week...

**Kerri Wachter** @knwachter

4 days ago

RT @BethShaz: Let me clarify: You can collect as frequently as your medical director approves. For example, NYBC is doing 4 times in 8 week...

**Kerri Wachter** @knwachter

4 days ago

RT @underthe_scope: @medlabmaria @AABB @BethShaz @cohn_md @McMasterU I think @NHSBT were looking into it and trials were being set up with...

**Pablo Mora** @morajp23

4 days ago

@angie_m_pati @BethShaz #AABBPEPtalk en mi opinión, no a todos los donantes se les puede hacer plasmaféresis y, ya que el donante de CCP debe pasar por la misma selección que cualquier otro donante, si se obtuvo WB entonces se separa y etiqueta su plasma como CCP y se aprovecha sus RBCs y plaquetas.

**Alma de Soa** @SoaSylvi

4 days ago

Please!! #AABBPEPtalk

**Dana Bostic** 🐘❤️ @ThatLabChick

4 days ago

RT @AABB: AABB created a protocol (that is being regularly updated) to help facilities jumpstart the collection of #COVID19 convalescent pl...

**Hector Bap** @habg03

4 days ago

@AABB #AABBPEPTalk An especial issue for underdeveloped countries is the economic cost of the global process to obtain a convalescent plasma unit. This is independent of the financing modality that each country has. Could someone give me an estimated cost in dollars?

**Sean Frost** @UofH_Blood

4 days ago

RT @BethShaz: A5: Mayo Clinic's eIND guidelines are probably the best place to start. Hopkins and Columbia are studying different patient p...

**Sergio Arias** @Sergioarias87

4 days ago

#AABBPEPtalk

**Sergio Arias** @Sergioarias87

4 days ago

Q1: En Sudamérica tenemos kits a disposición para titulación o se de crean?
#AABBPEPtalk

**Sergio Arias** @Sergioarias87

4 days ago

Q2: Que porcentaje de plasma convalesciente tiene titulo bajo o nulo? @AABB
#AABBPEPtalk

**Sergio Arias** @Sergioarias87

4 days ago

RT @BethShaz: Let me clarify: You can collect as frequently as your medical director approves. For example, NYBC is doing 4 times in 8 week...

**Jeremy Jacobs, MD, MHS** @jwjacobs12

4 days ago

RT @AABB: <https://t.co/yKIHD61iBU> is a new AABB website offering information and resources to the general public, blood collectors and clin...

**Kayla Fahey-Ahrndt** @kfaheyahrndt

4 days ago

RT @cohn_md: Thank you all for joining us! I'll try to follow up on additional questions as I am able. Thank you all for the work you're do...

**MarionMLS(ASCP)cm** @MLSCIENTISTStt

4 days ago

Haven't been on for a long time but had fun earlier today attending #AABBPEPtalk 🤗

**Alysson R. Fabris** @arfabris

4 days ago

RT @AABB: #COVID19 convalescent plasma is being used to help treat critically ill patients. Join @BethShaz and @Cohn_md at 1:00 pm EST toda...

**Christina Dean** @deanchr3

4 days ago

RT @BethShaz: A1: New York Blood Center has been collecting and distributing CCP for a couple of weeks. We had to work with our partner hos...

**Terumo BCT** @terumobct

4 days ago

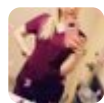
RT @BloodExperts: @BethShaz and @Cohn_MD discussing live now #COVID19 #convalescentplasma. Follow #AABBPEPtalk to join the conversation.



@smileyerin

4 days ago

#AccurateTrump2020Slogans #AskKTR #AskOliviaRodrigo #ACNHDesigns
#AnotherMissOh_SandaraPark #AnimalCrossingDesigns #AnimalCrossingNewHorizons
#AbuleEgbaKylieJenner #AskSinjin #Adrenochrome #askthemayor #AABBPEPtalk
#alterpinay #ANITWTFELFEDAY <https://t.co/niT6VmpgPs>

**blood bank barbie** 🐾 #insulin4all @chloeirena

4 days ago

@AABB A1: Many steps. Working on a process! Hopefully going to help a lot of people
😊 #AABBPEPtalk

**AABB** @AABB

4 days ago

@AngelicaViver14 @BethShaz @cohn_md The conversation happens through tweets!
You can search the #AABBPEPtalk to see what was discussed during the chat.

**nobody** @chaselionsway

4 days ago

RT @CcsNybc: @BethShaz and @Cohn_MD discussing live now #COVID19 #convalescentplasma. Follow #AABBPEPtalk to join the conversation.

**Hector Bap** @habg03

4 days ago

RT @habg03: @AABB #AABBPEPTalk An especial issue for underdeveloped countries is the economic cost of the global process to obtain a conval...

**John Sherbeck MD** @TeamCaptainJohn

4 days ago

RT @BethShaz: Let me clarify: You can collect as frequently as your medical director approves. For example, NYBC is doing 4 times in 8 week...

**Anand Padmanabhan** @AnandPheresisMD

4 days ago

RT @BethShaz: A1: New York Blood Center has been collecting and distributing CCP for a couple of weeks. We had to work with our partner hos...

**Melissa Upton** @MelissaUpton7

4 days ago

RT @ThatLabChick: I am loving the fact that we are having a diverse chat in #AABBPEPtalk and this is so worthy of highlighting 🤗 #Diversity!

**Med Peds Hospitalist** @medpedshosp

4 days ago

RT @AABB: AABB created a protocol (that is being regularly updated) to help facilities jumpstart the collection of #COVID19 convalescent pl...

**nobody** @chaselionsway

4 days ago

RT @BloodExperts: @BethShaz and @Cohn_MD discussing live now #COVID19 #convalescentplasma. Follow #AABBPEPtalk to join the conversation.

**nobody** @chaselionsway

4 days ago

RT @BethShaz: A3: The biggest challenge is that the donors need to be at least 28-days symptom-free or have a negative PCR. #AABBPEPtalk

**nobody** @chaselionsway

4 days ago

RT @my1blood: A2 Joining in on the @AABB #AABBPEPtalk. We are collecting #convalescentplasma throughout our service areas and have special...



👤 @firetr4ck

4 days ago

#AccurateTrump2020Slogans #AskKTR #AskOliviaRodrigo #ACNHDesigns
#AnotherMissOh_SandaraPark #AnimalCrossingDesigns #AnimalCrossingNewHorizons
#AbuleEgbaKylieJenner #AskSinjin #Adrenochrome #askthemayor #AABBPEPtalk
#alterpinay #ANITWTSELFIEDAY <https://t.co/mSdDeYLmKH>

**Small G** @DaxtonMr

3 days ago

@CjBugger Yesterday night there was a @AABB Discussion on the Regulations, Donation and use Convalescent plasma under the #AABBPEPtalk.



Dr Sylvia Benjamin @Gogmum

3 days ago

RT @SoaSylvi: @AABB A1: Hi, we want to start the collection of convalescent plasma, but we have so many questions about antibodies titrati...



Dr Sylvia Benjamin @Gogmum

3 days ago

RT @BethShaz: Many companies are working on this. Currently, organizations have developed in-house ELIZAs. For example, Univ of Minn is usi...



Ahmed AlSagheir @AhmadAlsagheir

3 days ago

RT @BethShaz: A4: What challenges have there not been! The main three, especially right in the beginning, were identifying donors, the lack...



AABB @AABB

3 days ago

RT @DaxtonMr: @CjBugger Yesterday night there was a @AABB Discussion on the Regulations, Donation and use Convalescent plasma under the #A...



KimDrd @batchuy

3 days ago

RT @DaxtonMr: @CjBugger Yesterday night there was a @AABB Discussion on the Regulations, Donation and use Convalescent plasma under the #A...



Satyam Arora M.D. @arorasatyam12

3 days ago

RT @BethShaz: A1: New York Blood Center has been collecting and distributing CCP for a couple of weeks. We had to work with our partner hos...



sunita tulsiani @sunita_tulsiani

3 days ago

RT @cohn_md: @SoaSylvi @AABB The FDA initially chose a titer of 1:320, however, the agency has now reduced the titer to 1:80. #AABBPEpTalk



sunita tulsiani @sunita_tulsiani

3 days ago

RT @BethShaz: A5: Mayo Clinic's eIND guidelines are probably the best place to start. Hopkins and Columbia are studying different patient p...



sunita tulsiani @sunita_tulsiani

3 days ago

RT @BethShaz: A4: What challenges have there not been! The main three, especially right in the beginning, were identifying donors, the lack...



sunita tulsiani @sunita_tulsiani

3 days ago

RT @BethShaz: Collect and manufacture it as you would plasma. It's a typical frozen plasma product. #AABBPEptalk



sunita tulsiani @sunita_tulsiani

3 days ago

RT @BethShaz: A3: The biggest challenge is that the donors need to be at least 28-days symptom-free or have a negative PCR. #AABBPEptalk



sunita tulsiani @sunita_tulsiani

3 days ago

RT @BethShaz: A3: (1/2) NYBC now has a website to recruit CCP donors: <https://t.co/q869ajjATT>. AABB has also recently launched <https://t.co...>



sunita tulsiani @sunita_tulsiani

3 days ago

RT @cohn_md: @AABB A3: (1/2) We are notifying staff and patients who have recovered from COVID19 that there is a pathway to donate. We are...



sunita tulsiani @sunita_tulsiani

3 days ago

RT @cohn_md: @AABB A3: (2/2) We are also instructing recovered patients to return to the hospital to have their antibody titer test drawn....



sunita tulsiani @sunita_tulsiani

3 days ago

RT @cohn_md: @AABB A5: (2/2) If there is limited CCP we may consider giving it primarily to patients who show signs of needing the ICU but...



sunita tulsiani @sunita_tulsiani

3 days ago

RT @cohn_md: @AABB A5: (1/2) We follow the guidelines on the Mayo protocol for expanded access to CCP. Basically, donors must be adults wit...



sunita tulsiani @sunita_tulsiani

3 days ago

RT @cohn_md: @batchuy @alialiali198851 I don't have advice for fresh vs. frozen. We are using frozen plasma because that is what my blood c...



sunita tulsiani @sunita_tulsiani

3 days ago

RT @cohn_md: @dskrausemdphd @AABB @MaracajaDLV This is a complicated answer. We're not specifically tracking patient plasma and the unit th...



sunita tulsiani @sunita_tulsiani

3 days ago

RT @cohn_md: @BethShaz *Needing a lab test proving that they were COVID-positive #AABBPEpTalk



Andres E. Mendiola Romero, MD @MendiolaMD

3 days ago

RT @BethShaz: A1: New York Blood Center has been collecting and distributing CCP for a couple of weeks. We had to work with our partner hos...



KasiaHP @Kasia_HP

3 days ago

RT @BloodExperts: @BethShaz and @Cohn_MD discussing live now #COVID19 #convalescentplasma. Follow #AABBPEptalk to join the conversation.



Amy Curran @DrGsLabRat

3 days ago

RT @AABB: AABB created a protocol (that is being regularly updated) to help facilities jumpstart the collection of #COVID19 convalescent pl...

**Amy Curran** @DrGsLabRat

3 days ago

RT @AABB: Additional resources will be posted on AABB's #COVID19 Convalescent Plasma Resources webpage [🔗 https://t.co/N765pNhwbg](https://t.co/N765pNhwbg) #AABBPEPTa...

**Daniela Hermelin, MD** @HermelinMD

3 days ago

RT @cohn_md: @AABB A4: To gain access to CCP we had to enroll in a protocol. This was initially very confusing as there were several protoc...

**Daniela Hermelin, MD** @HermelinMD

3 days ago

!Do you have patients recovering from #COVID19? They can be a potential #convalescentplasma donors. ☐ Donors must meet all donor eligibility AND >18 years old, positive COVID19 test, +28 day recovery period from the onset of symptoms. To learn more [🔗 https://t.co/kkoH4dZVs4](https://t.co/kkoH4dZVs4)

**Leo Reap** @Leo_ReapDO

3 days ago

RT @HermelinMD: !Do you have patients recovering from #COVID19? They can be a potential #convalescentplasma donors. ☐ Donors must meet all...

**حابي الله ونعم الوكيل** @ahalim12

3 days ago

RT @HermelinMD: !Do you have patients recovering from #COVID19? They can be a potential #convalescentplasma donors. ☐ Donors must meet all...

**John Sherbeck MD** @TeamCaptainJohn

3 days ago

RT @HermelinMD: !Do you have patients recovering from #COVID19? They can be a potential #convalescentplasma donors. ☐ Donors must meet all...

**Shu, RMT** @anueru432

3 days ago

RT @HermelinMD: !Do you have patients recovering from #COVID19? They can be a potential #convalescentplasma donors. ☐ Donors must meet all...

**Faye Yang** @faye_y_yang

3 days ago

RT @HermelinMD: !Do you have patients recovering from #COVID19? They can be a potential #convalescentplasma donors. ☐ Donors must meet all...

**Bindu Challa** @BinduChalla1

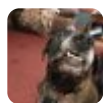
3 days ago

RT @HermelinMD: !Do you have patients recovering from #COVID19? They can be a potential #convalescentplasma donors. ☐ Donors must meet all...

**Niranjn Khaire** @niranjankhaire

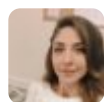
2 days ago

RT @HermelinMD: !Do you have patients recovering from #COVID19? They can be a potential #convalescentplasma donors. ☐ Donors must meet all...

**6 feet apart people** @calimccammon

2 days ago

RT @HermelinMD: !Do you have patients recovering from #COVID19? They can be a potential #convalescentplasma donors. ☐ Donors must meet all...

**Gül Özbek** @Glzbek1


2 days ago

RT @HermelinMD: !?Do you have patients recovering from #COVID19? They can be a potential #convalescentplasma donors. ☐Donors must meet all...

**Radoslaw Kaczmarek** @RKaczmarekDr


2 days ago

RT @HermelinMD: !?Do you have patients recovering from #COVID19? They can be a potential #convalescentplasma donors. ☐Donors must meet all...

**Carrie Easley** + @BloodBankEasley

2 days ago

RT @HermelinMD: !?Do you have patients recovering from #COVID19? They can be a potential #convalescentplasma donors. ☐Donors must meet all...

**Carrie Easley** + @BloodBankEasley

2 days ago

RT @BethShaz: A1: New York Blood Center has been collecting and distributing CCP for a couple of weeks. We had to work with our partner hos...

**Ximena (quedate en casa!!!) Bruno** @XimeJordan

2 days ago

RT @HermelinMD: !?Do you have patients recovering from #COVID19? They can be a potential #convalescentplasma donors. ☐Donors must meet all...

**Kim Ingersoll, MD** @Kim_Ingersoll

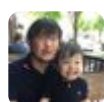
2 days ago

RT @HermelinMD: !?Do you have patients recovering from #COVID19? They can be a potential #convalescentplasma donors. ☐Donors must meet all...

**Dana Razzano, MD** @Dr_DR_Cells

a day ago

RT @HermelinMD: !?Do you have patients recovering from #COVID19? They can be a potential #convalescentplasma donors. ☐Donors must meet all...

**Woo Cheal Cho, MD** @DrAldehyde

a day ago

RT @HermelinMD: !?Do you have patients recovering from #COVID19? They can be a potential #convalescentplasma donors. ☐Donors must meet all...

**Adriana Zucchiatti, MD** @zucchiatti_

a day ago

RT @HermelinMD: !?Do you have patients recovering from #COVID19? They can be a potential #convalescentplasma donors. ☐Donors must meet all...

**AFMRD** @TheAFMRD

a day ago

RT @AABB: <https://t.co/yKIHD61iBU> is a new AABB website offering information and resources to the general public, blood collectors and clin...

**Ritcha Saxena, MD** @RitchaSaxena

a day ago

RT @ThatLabChick: I am loving the fact that we are having a diverse chat in #AABBPEptalk and this is so worthy of highlighting 🤗 #Diversityl...

Showing 1 to 459 of 459 entries